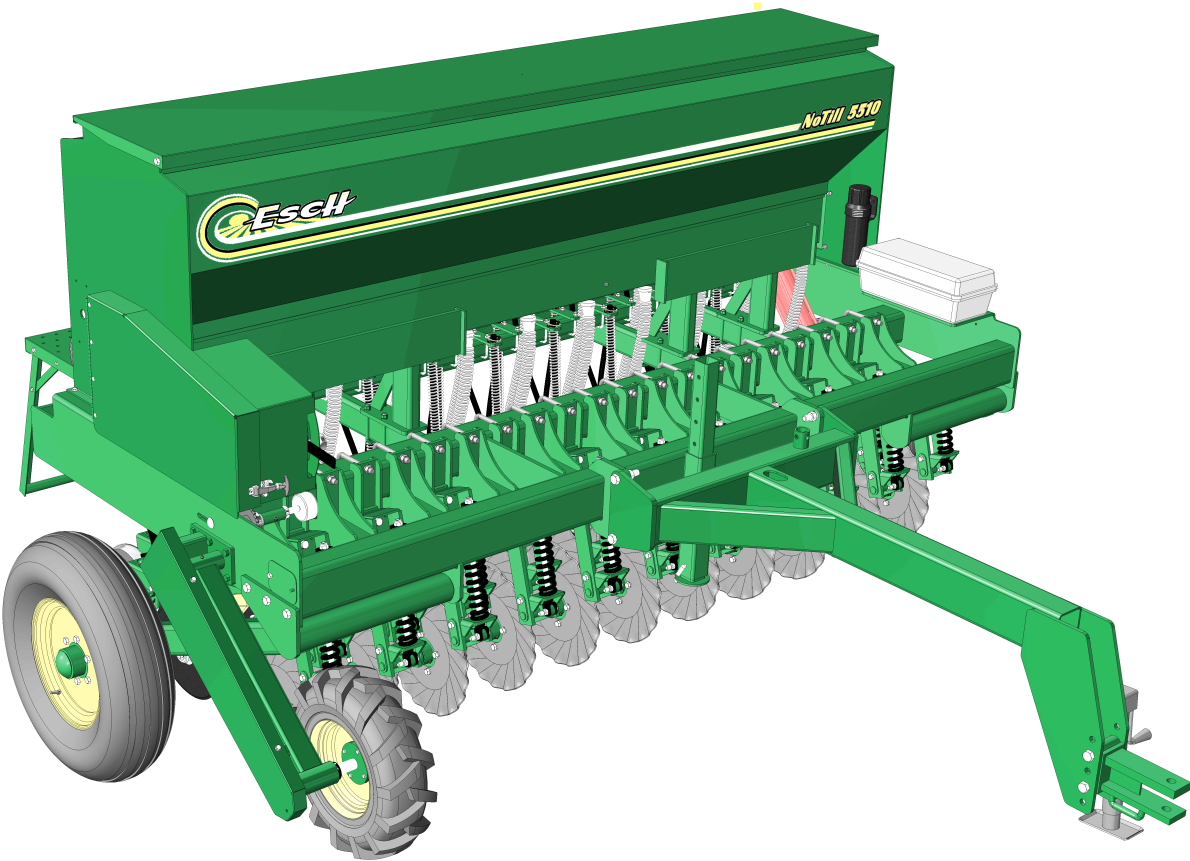


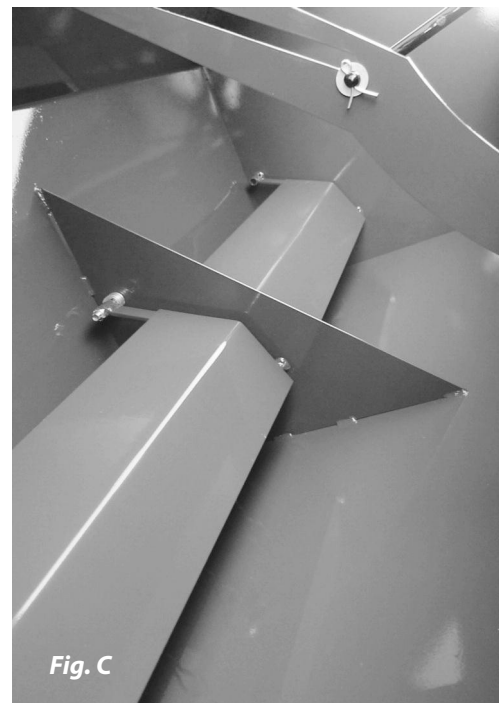
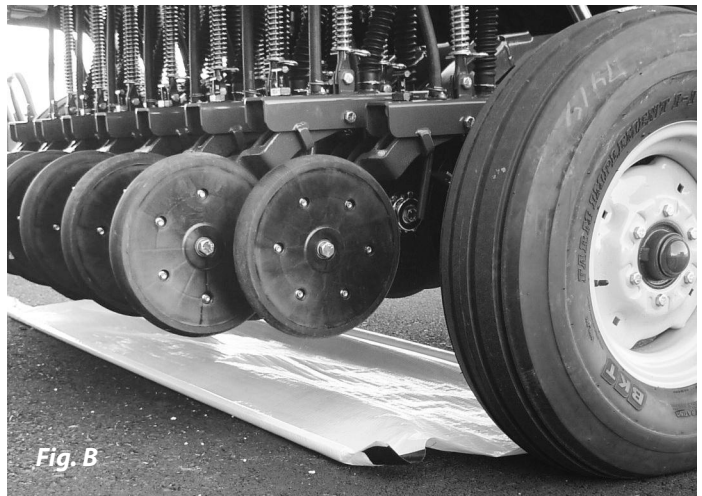
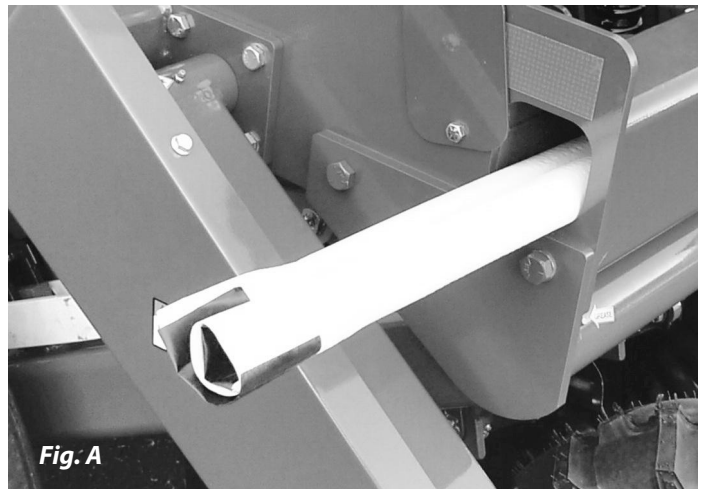
# ESCH 5510 DRILL

## Operator's Manual and Parts List



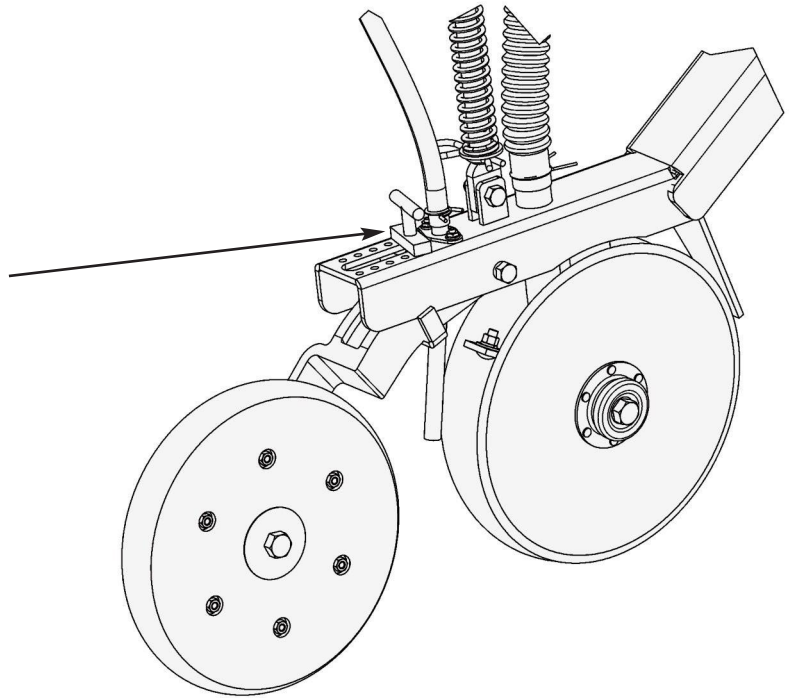
## Seed Calibrations and Settings

- Remove plastic from frame (see Fig. A).
- Place plastic under drill to collect seeds for calibration (see Fig. B).
- See seed chart on lid for further instructions. Note: Be sure to turn drive wheel the correct direction. **WARNING: turning drive wheel too fast will result in wrong calibration. Turn wheel at ground speed.**
- When placing seed in hopper, keep seed baffles down (see Fig.C).
- Keep baffles in up position when seeding fluffy seed.



## Setting Seeding Depth

- No-till coulters depth can only be set by lowering and raising drill.
- Set no-till coulters approximately 1/2" to 1" deeper than seeding depth.
- Seeding depth can be adjusted by sliding T-handle forward for shallow and backward for deeper.



## Safety

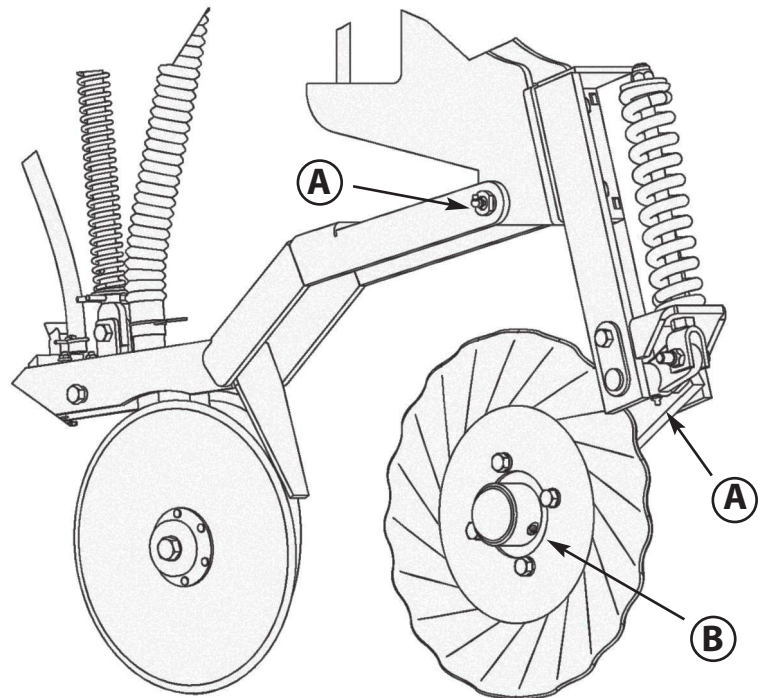
- Do not ride on drill while moving.
- Do not make sharp turns while drill is down.
- Raise drill when going over rocks that are above ground.

## Storage

- Do not store in area where there are lots of mice. Mice like to chew the foams if they can get in the seed box.

## Maintenance

- Grease coulters arms: every 10 hours. **(A)**
- Grease coulters hubs: every 50 hours. **(B)**
- Grease all other zerks: every 20 hours.



## Replacing Foams

- Remove shield on back side of drill (wing nuts).
- Remove shield on left side of seed box.
- Loosen set screws where square shaft slides into round coupler.
- Now shaft is ready to pull out.
- Foam can be cut from plate with a sharp knife or razor.
- Set foams and plate on a piece of card board.
- Spray foams and plates with a spray adhesive.
- Leave set for approximately 1 minute before setting foam on plate.

## **Trouble Shooting**

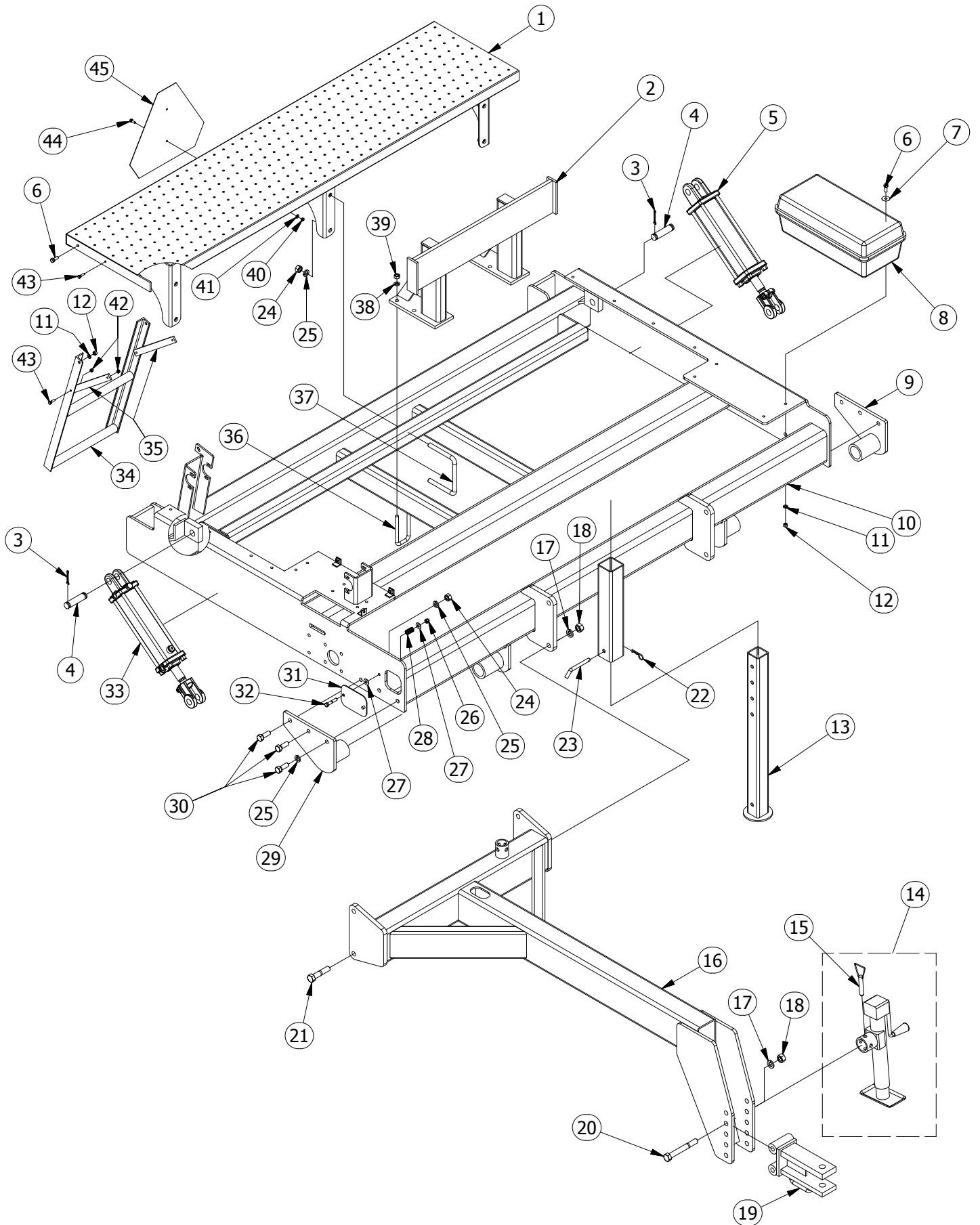
### ***1 - Seed flows faster on one row:***

Foam may be torn or mouse may have chewed a hole in the foam.

### ***2 - One side of drill is lower than other side:***

Raise drill the whole way up to reallign.

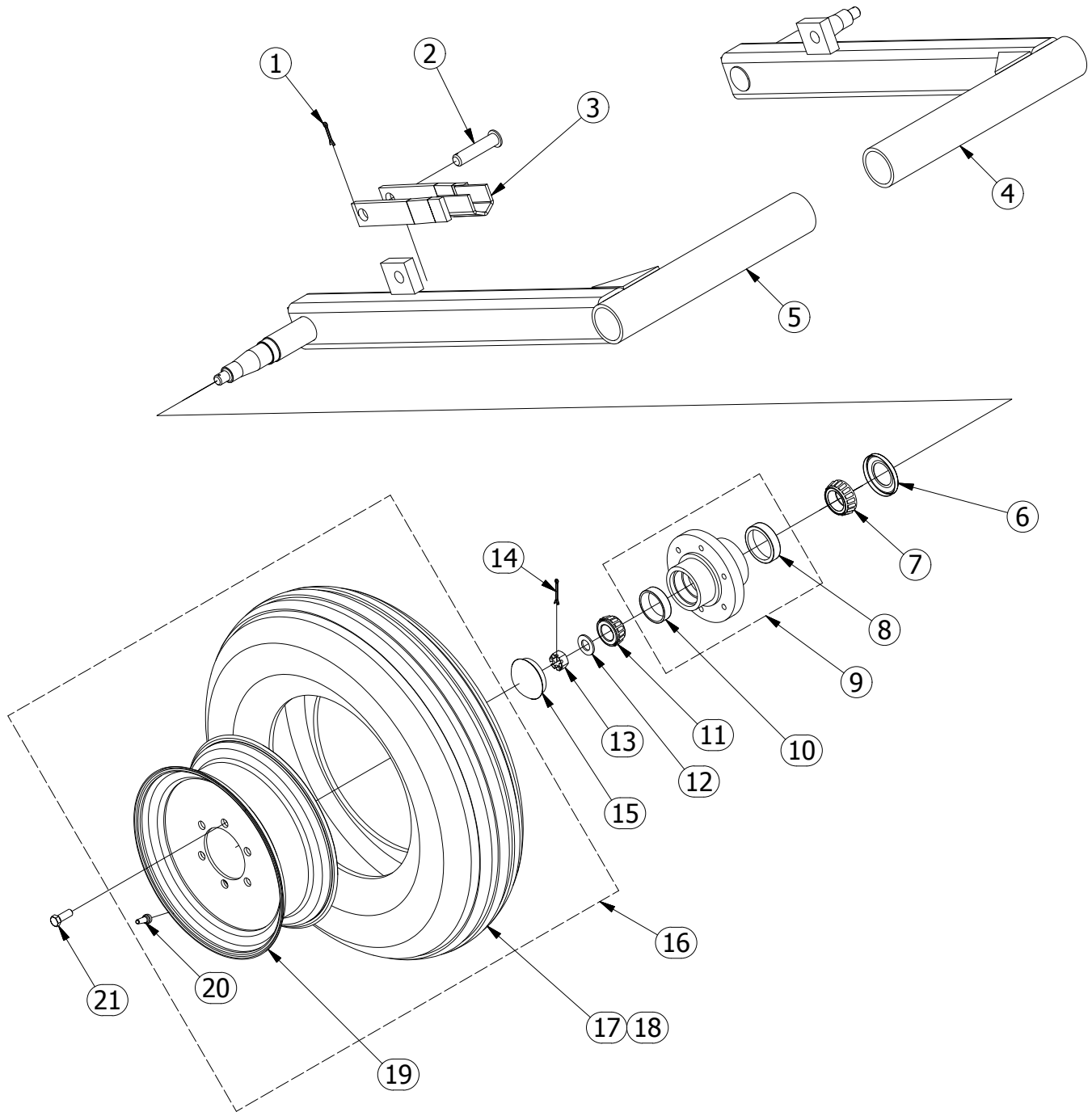
# FRAME ASSEMBLY - 5510 DRILL



# FRAME ASSEMBLY - 5510 DRILL

PARTS LIST				
ITEM	QTY	PART #	DESCRIPTION	COMMENTS
1	1	1126	PLATFORM	
2	2	1116	WEIGHT BRACKET	
3	4	91100800	COTTER PIN	
4	2	1124	CYLINDER PIN	
5	1	1127	HYDRAULIC CYLINDER	
6	6	12416045	HEX BOLT	
7	4	72405000	FENDER WASHER	
8	1	1115	TOOL BOX	
9	1	1108	SUPPORT - LEFT	
10	1	1125	FRAME	
11	6	62400000	SPRING LOCK WASHER	
12	6	32416005	HEX NUT	
13	1	1110	TRANSPORT JACK	
14	1	1101	JACK	
15	1	1102	PIN	
16	1	1104	TONGUE	
17	6	64800000	SPRING LOCK WASHER	
18	6	34810005	HEX NUT	
19	1	1103	HITCH	
20	2	14810245	HEX BOLT	
21	4	14810145	HEX BOLT	
22	1	1128	HAIRPIN	
23	1	1111	PIN	
24	11	34011005	HEX NUT	
25	10	64000000	SPRING LOCK WASHER	
26	1	52416005	LOCK NUT	
27	1	72400000	WASHER	
28	1	1613	SPRING	
29	1	1109	SUPPORT RIGHT	
30	6	14011075	HEX BOLT	
31	1	1123	TARP COVER	
32	1	12416065	HEX BOLT	
33	1	1106	HYDRAULIC CYLINDER	
34	1	1120	LADDER	
35	2	1121	BRACE	
36	8	1117	U BOLT	
37	3	1118	U BOLT	
38	16	63200000	SPRING LOCK WASHER	
39	16	33213005	HEX NUT	
40	4	31620005	HEX NUT	
41	4	62000000	SPRING LOCK WASHER	
42	2	51620002	LOCK NUT	
43	4	11620045	HEX BOLT	
44	2	11620035	HEX BOLT	
45	1	1122	SMV	

# LIFT WHEEL ASSEMBLY - 5510 DRILL

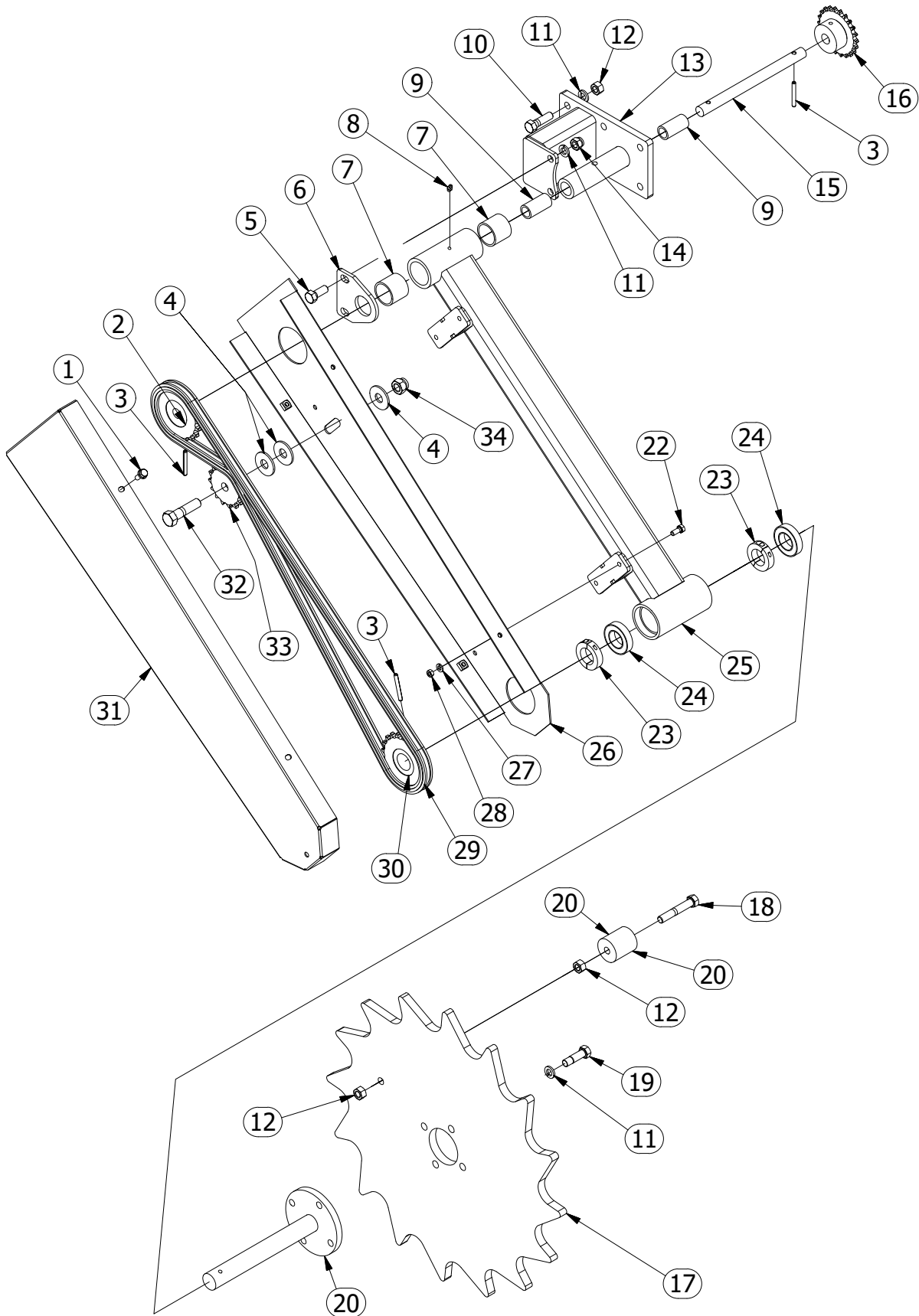




## LIFT WHEEL ASSEMBLY - 5510 DRILL

PARTS LIST				
ITEM	QTY	PART #	DESCRIPTION	COMMENTS
1	2	91120600	COTTER PIN	
2	2	1167	PIN	
3	2	1166	CYLINDER PROP	
4	1	1171	WHEEL ARM LEFT	
5	1	1172	WHEEL ARM RIGHT	
6	2	1174	WHEEL SEAL	
7	2	1176	BEARING	
8	2	1175	BEARING CUP	
9	2	1173	WHEEL HUB	INCLUDES #1175, 1177
10	2	1177	BEARING CUP	
11	2	1178	BEARING	
12	2	85600000	SAE WASHER	
13	2	1663	SLOTTED HEX NUT	
14	2	91100800	COTTER PIN	
15	2	1179	HUB CAP	
16	1	1165	WHEEL	INCLUDES #1162, 1163, 1190
17	2	1162	TIRE	
18	1	1161	INNER TUBE	
19	2	1163	RIM	
20	2	1190	VALVE STEM	
21	12	1180	LUG BOLT	

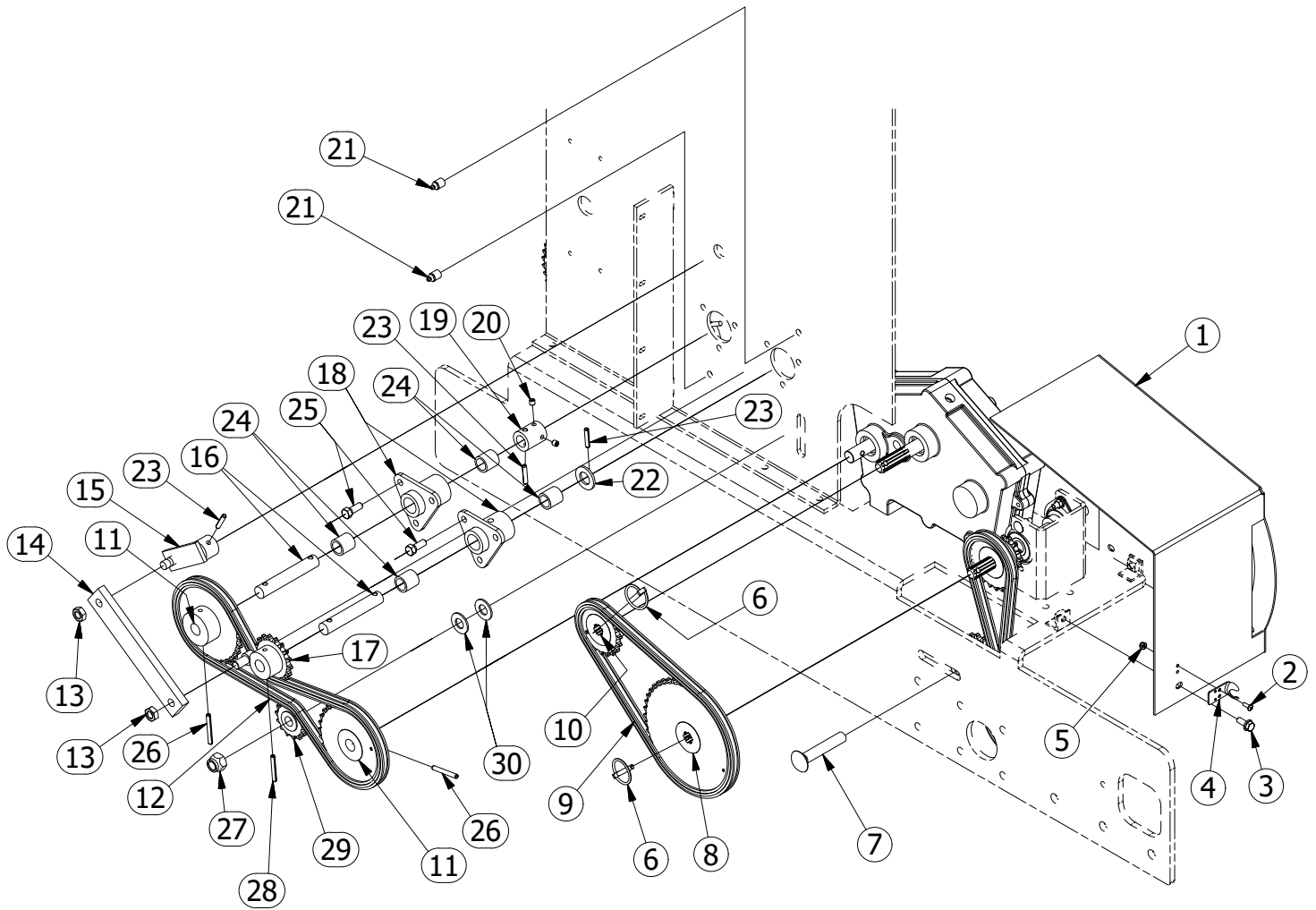
# DRIVE ARM - 5510 DRILL



# DRIVE ARM - 5510 DRILL

PARTS LIST				
ITEM	QTY	PART #	DESCRIPTION	COMMENTS
1	4	12018032	HEX FLANGE BOLT	
2	1	1517	SPROCKET - 20T	
3	3	93160800	ROLL PIN	
4	3	74000000	WASHER	
5	2	13213055	HEX BOLT	
6	1	1502	SUPPORT	
7	2	1518	BUSHING	
8	1	Z1428	ZERK	
9	2	1519	BUSHING	
10	6	13213075	HEX BOLT	
11	12	63200000	SPRING LOCK WASHER	
12	8	33213005	HEX NUT	
13	1	1501	SUPPORT	
14	2	53213005	LOCK NUT	
15	1	1520	SHAFT	
16	1	1527	SPROCKET - 22T	
17	1	1521	DRIVE WHEEL - SOLID	AFTER SERIAL #170367
18	1	13213128	HEX BOLT	
19	4	13220075	HEX BOLT	
20	1	1511	SLEEVE	
21	1	1513	DRIVE WHEEL SPINDLE	
22	4	12018035	HEX BOLT	
23	2	1507	SHAFT COLLAR	
24	2	1506	BEARING	
25	1	1503	DRIVE WHEEL ARM	
26	1	1504	SHIELD	
27	4	62000000	SPRING LOCK WASHER	
28	4	31620005	HEX NUT	
29	1	1515	CHAIN	
30	1	1514	SPROCKET - 20T	
31	1	1505	SHIELD	
32	1	14011105	HEX BOLT	
33	1	1516	IDLER SPROCKET	
34	1	54011005	LOCK NUT	

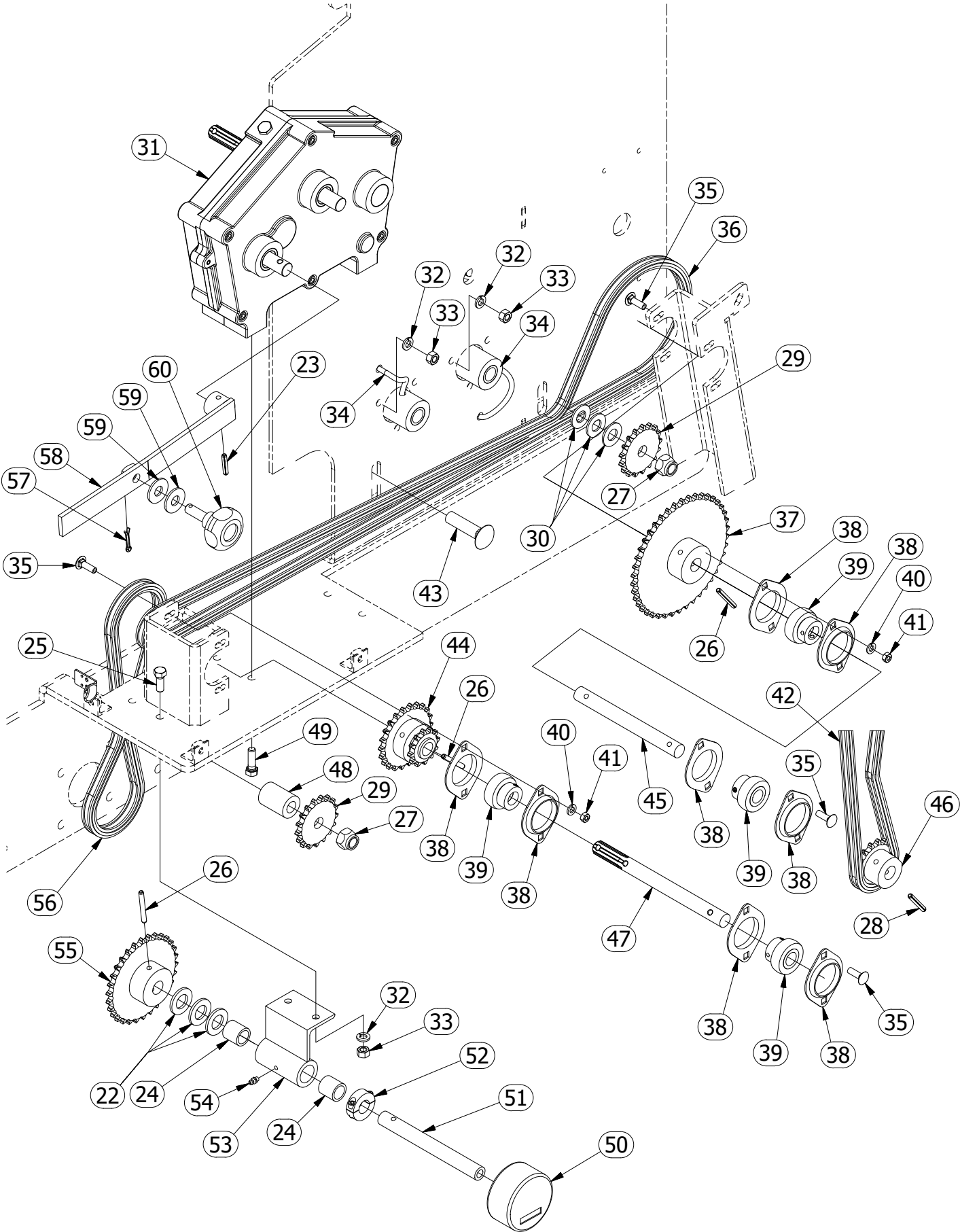
# DRIVE ASSEMBLY - OUTSIDE - 5510 DRILL



## DRIVE ASSEMBLY - OUTSIDE - 5510 DRILL

PARTS LIST				
ITEM	QTY	PART #	DESCRIPTION	COMMENTS
1	1	1403	GEARBOX SHIELD	
2	2	11024022	PAN HEAD MACHINE SCREW	
3	3	12018032	HEX FLANGE BOLT	
4	1	1404	HOOD LATCH SUPPORT	
5	2	51024002	LOCK NUT	
6	2	1421	LINCH PIN	
7	1	24011145	CARRIAGE BOLT	
8	1	1419	SPROCKET - 45T	
9	1	1420	CHAIN	
10	1	1418	SPROCKET - 20T	
11	2	1410	SPROCKET - 32T	
12	1	1426	CHAIN	
13	2	53213002	HEX JAM LOCK NUT	
14	1	1407	AGITATOR LINK	
15	1	1406	AGITATOR ARM	
16	2	1412	SEED BOX JACK SHAFT	
17	1	1408	SPROCKET - 17T	
18	2	1416	TRIANGLE HUB	
19	1	1411	SQUARE COUPLER	
20	2	1414	SET SCREW	
21	2	Z18FP	ZERK	
22	4	84800000	SAE WASHER	
23	4	93160500	ROLL PIN	
24	6	1415	BRONZE BUSHING	
25	8	12416045	HEX BOLT	
26	5	93160800	ROLL PIN	
27	3	54011005	LOCK NUT	
28	2	93160700	ROLL PIN	
29	3	1409	IDLER SPROCKET	
30	5	84000000	SAE WASHER	

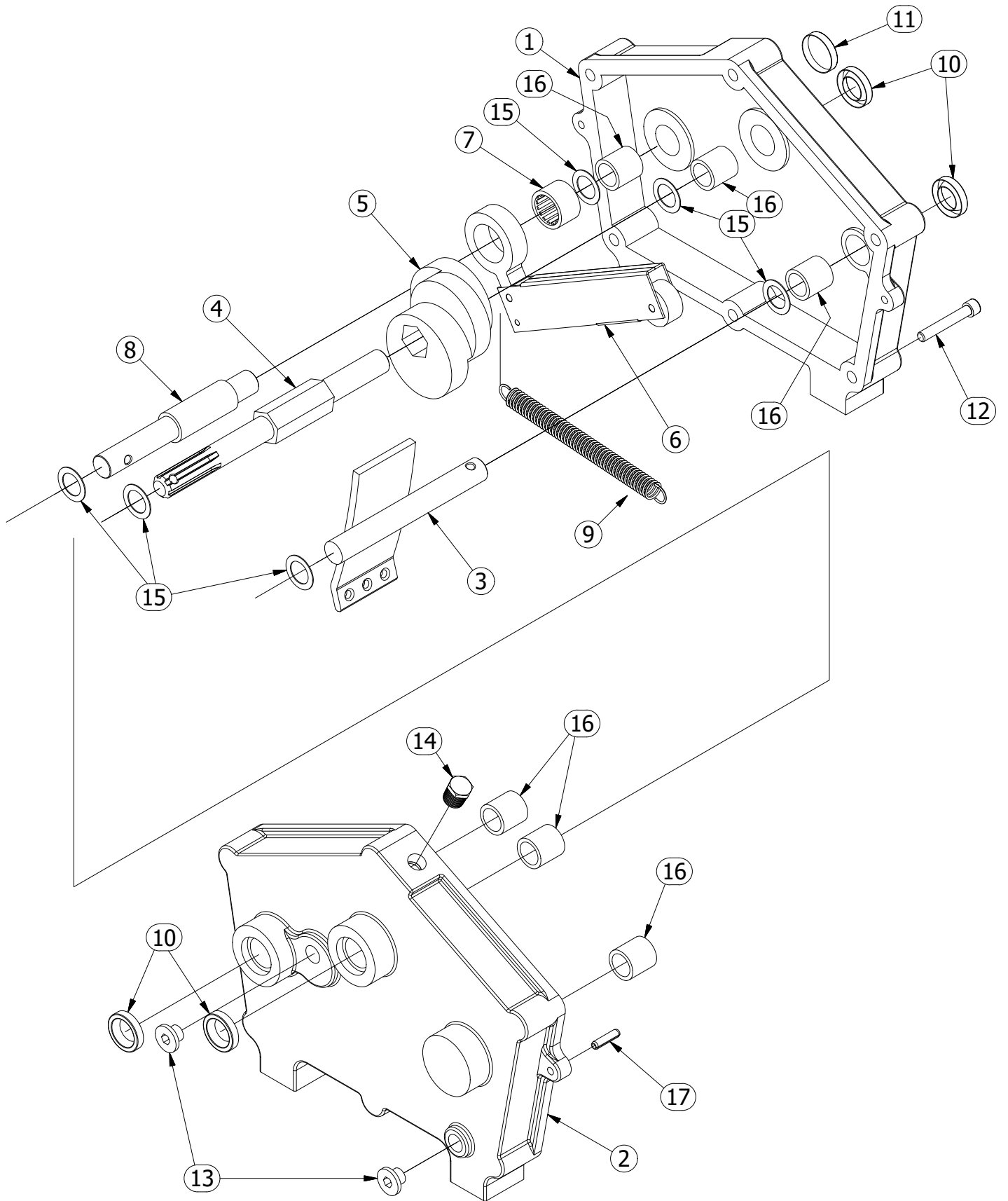
# DRIVE ASSEMBLY - INSIDE - 5510 DRILL



## DRIVE ASSEMBLY - INSIDE - 5510 DRILL

PARTS LIST				
ITEM	QTY	PART #	DESCRIPTION	COMMENTS
22	4	84800000	SAE WASHER	
23	4	93160500	ROLL PIN	
24	6	1415	BRONZE BUSHING	
25	8	12416045	HEX BOLT	
26	5	93160800	ROLL PIN	
27	3	54011005	LOCK NUT	
28	2	93160700	ROLL PIN	
29	3	1409	IDLER SPROCKET	
30	5	84000000	SAE WASHER	
31	1	1401	GEARBOX	
32	12	62400000	SPRING LOCK WASHER	
33	8	32416005	HEX NUT	
34	2	1417	GREASE HOSE	
35	8	22018042	CARRIAGE BOLT	
36	1	1439	CHAIN	
37	1	1435	SPROCKET - 42T	
38	8	1424	BEARING FLANGE	
39	4	1423	BEARING	
40	8	62000000	SPRING LOCK WASHER	
41	8	31620005	HEX NUT	
42	1	1438	CHAIN	
43	2	24011105	CARRIAGE BOLT	
44	1	1425	SPROCKET - 22T, 12T	
45	1	1436	SHAFT	
46	1	1437	SPROCKET - 16T	
47	1	1422	SPLINE SHAFT	
48	1	1428	SPACER	
49	4	12416055	HEX BOLT	
50	1	1440	ACRE METER	
51	1	1430	ACRE METER SHAFT	
52	1	1433	SHAFT COLLAR	
53	1	1432	SUPPORT	
54	1	Z1428	ZERK	
55	1	1441	SPROCKET - 27T	
56	1	1434	CHAIN	
57	1	91100400	COTTER PIN	
58	1	1402	GEARBOX LEVER	
59	2	73200000	WASHER	
60	1	1405	KNOB	

# GEARBOX - 5510 DRILL

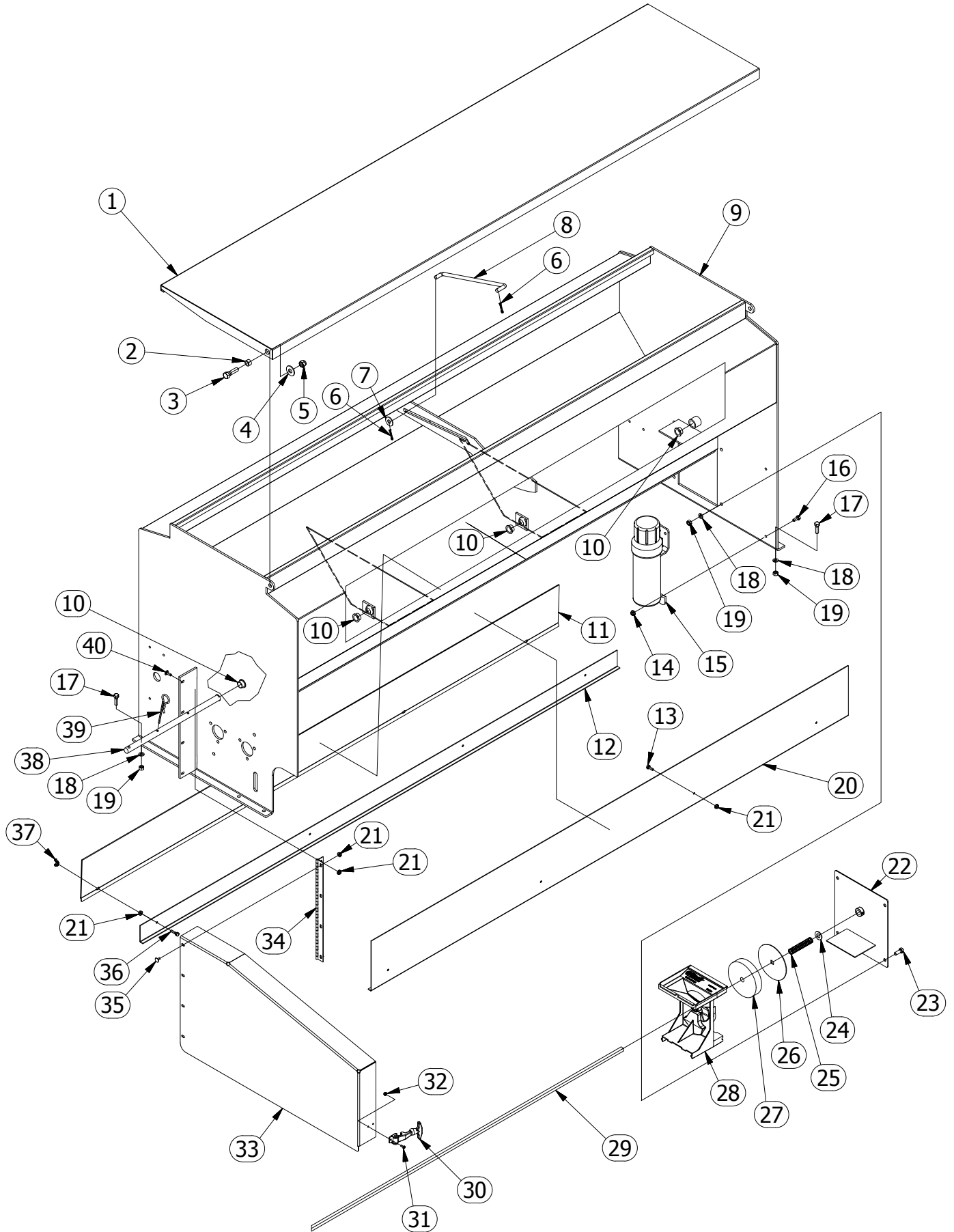




# GEARBOX - 5510 DRILL

PARTS LIST				
ITEM	QTY	PART #	DESCRIPTION	COMMENTS
1	1	1301	GEARBOX LEFT CASTING	INCLUDES #1310, 1311, 1415
2	1	1302	GEARBOX RIGHT CASTING	INCLUDES #1310, 1415
3	1	1303	CAM GUIDE	
4	1	1304	SHAFT	
5	1	1305	GEARBOX CAM	
6	3	1306	GEARBOX ARM	
7	3	1307	CLUTCH BEARING	
8	1	1308	CAM ARM SHAFT	
9	3	1309	GEARBOX SPRING	
10	4	1310	SEAL	
11	1	1311	CAP	
12	6	1312	SOCKET HEAD BOLT	
13	2	1314	PLUG	
14	1	1315	BREATHER PLUG	
15	6	1316	SHIM WASHER	
16	6	1415	BRONZE BUSHING	
17	2	93160400	ROLL PIN	

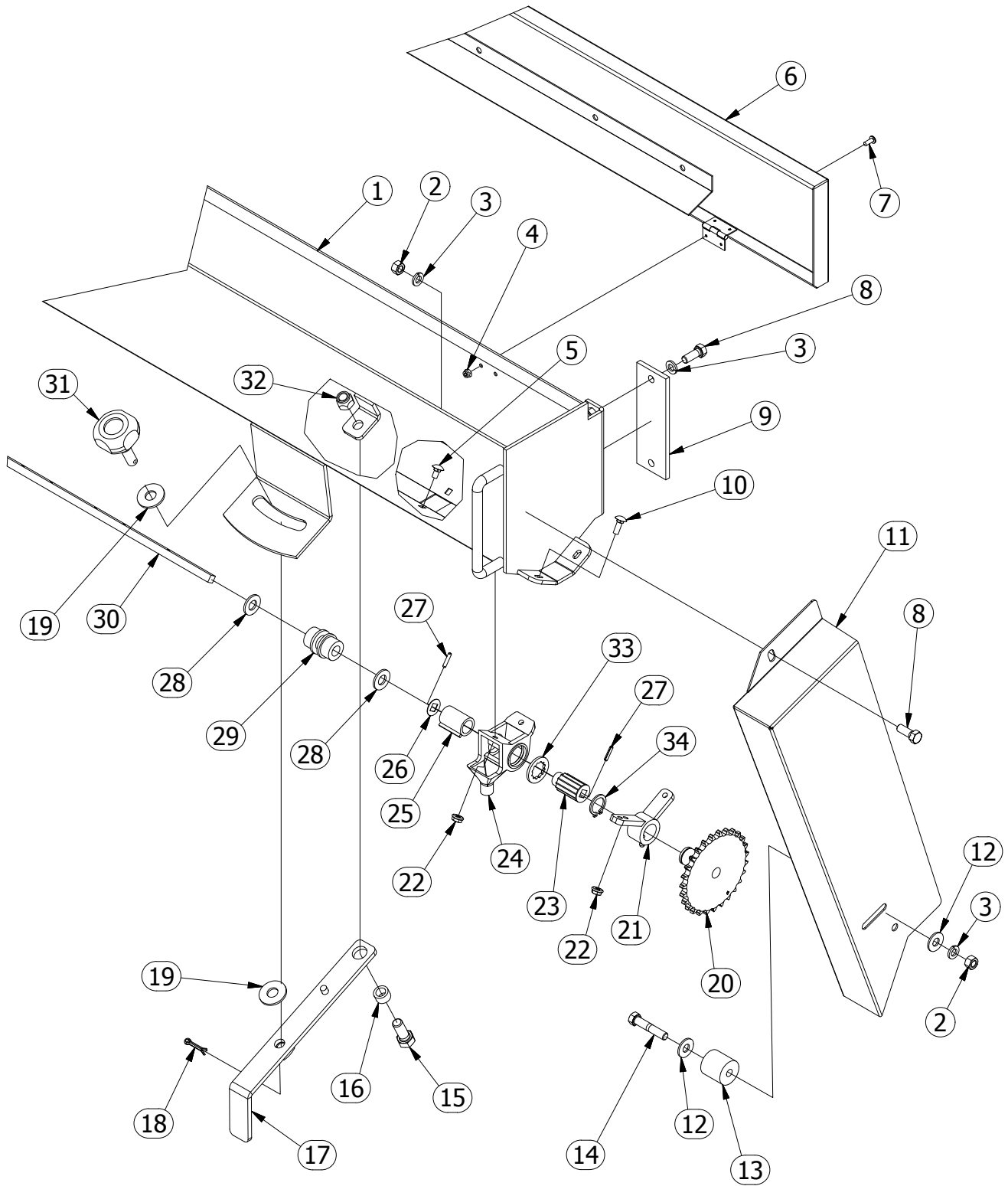
# SEED BOX ASSEMBLY - 5510 DRILL



# SEED BOX ASSEMBLY - 5510 DRILL

PARTS LIST				
ITEM	QTY	PART #	DESCRIPTION	COMMENTS
1	1	1222	SEED BOX LID	
2	2	1608	BUSHING	
3	2	13213075	HEX BOLT	
4	2	73200000	WASHER	
5	2	53213005	LOCK NUT	
6	2	91100400	COTTER PIN	
7	1	72800000	WASHER	
8	1	1203	LID GUIDE	
9	1	1221	SEED BOX	
10	5	1214	BUSHING	
11	1	1225	REAR SHEILD REMOVABLE	
12	1	1224	REAR SHIELD	
13	4	11620035	HEX BOLT	
14	1	1220	MANUAL HOLDER	
15	2	41818005	HEX FLANGE NUT	
16	2	12018035	HEX BOLT	
17	8	12416055	HEX BOLT	
18	12	62400000	SPRING LOCK WASHER	
19	12	32416005	HEX NUT	
20	1	1223	FRONT SHIELD	
21	16	41620005	HEX FLANGE NUT	
22	1	1208	COVER	
23	4	12416045	HEX BOLT	
24	21	83600000	SAE WASHER	
25	21	1212	SPRING	
26	21	1210	FOAM PLATE	
27	21	1211	FOAM	
28	21	1209	SEED SHOOT	
29	1	1226	SEED BOX DRIVE SHAFT	
30	1	1219	HOOD LATCH	
31	2	11024022	PAN HEAD MACHINE SCREW	
32	2	51024002	LOCK NUT	
33	1	1218	GEARBOX SHIELD	
34	1	1217	HINGE	
35	4	21620022	CARRIAGE BOLT	
36	4	11620045	HEX BOLT	
37	4	1207	WING NUT	
38	1	1227	AGITATOR SHAFT	
39	21	1216	AGITATOR CLIP	
40	4	21620032	CARRIAGE BOLT	

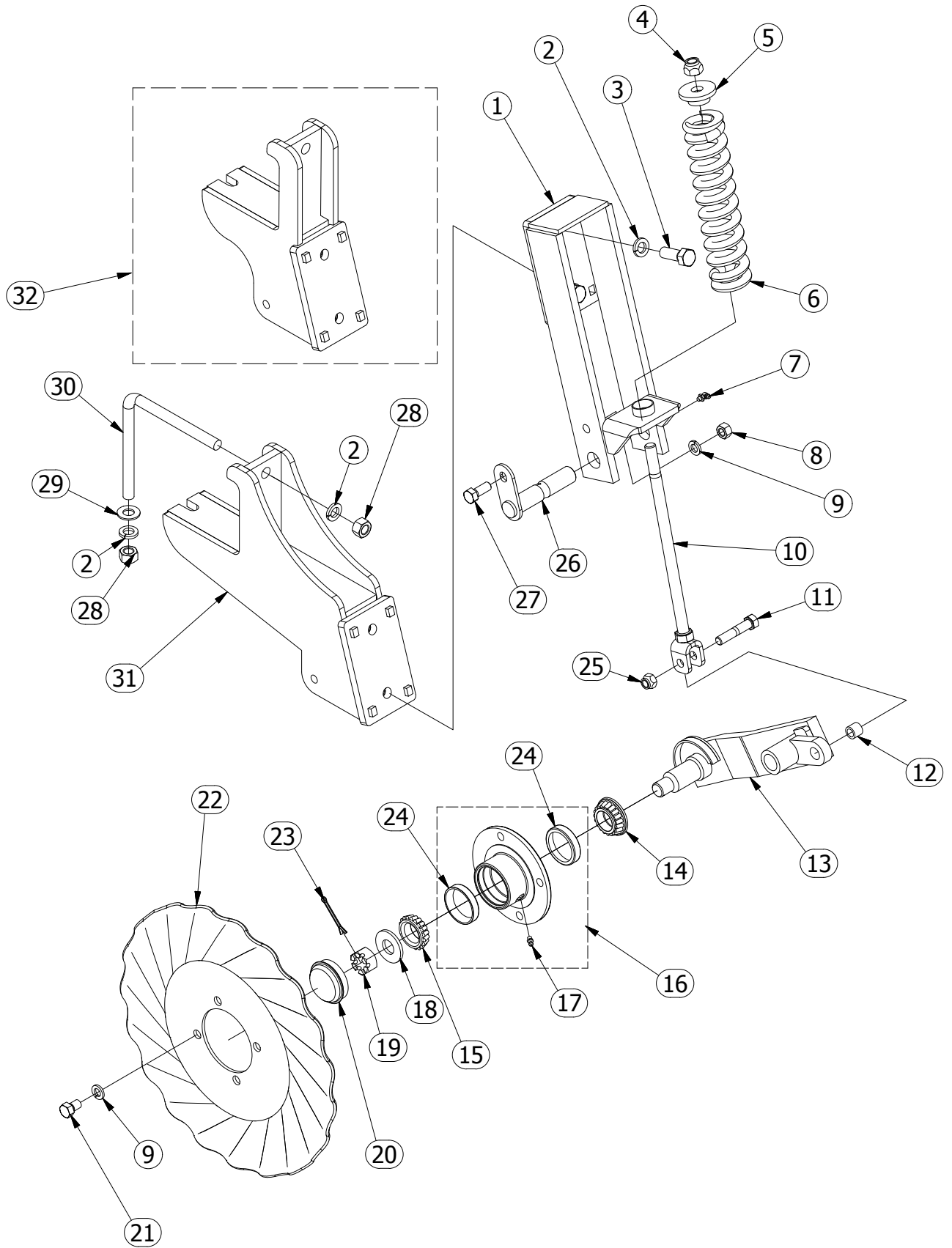
# SMALL SEED BOX - 5510 DRILL



## SMALL SEED BOX - 5510 DRILL

PARTS LIST				
ITEM	QTY	PART #	DESCRIPTION	COMMENTS
1	1	1921	SEED BOX	
2	2	32416005	HEX NUT	
3	6	62400000	SPRING LOCK WASHER	
4	4	51024002	LOCK NUT	
5	42	21620022	CARRIAGE BOLT	
6	1	1922	LID	
7	4	11024022	PAN HEAD MACHINE SCREW	
8	5	12416045	HEX BOLT	
9	2	1900	SUPPORT	
10	2	21620032	CARRIAGE BOLT	
11	1	1914	SHIELD	
12	2	72400000	WASHER	
13	1	1915	CHAIN TIGHTNER	
14	1	12416065	HEX BOLT	
15	1	13213055	Hex Bolt	
16	1	1608	BUSHING	
17	1	1910	SMALL BOX LEVER	
18	1	91100400	COTTER PIN	
19	2	73200000	WASHER	
20	1	1912	SPROCKET	
21	1	1911	BEARING	
22	44	41620005	HEX FLANGE NUT	
23	21	1906	SEED SPROCKET	
24	21	1904	SEED CUP	
25	21	1907	SLEEVE	
26	21	1908	WASHER	
27	43	93100300	ROLL PIN	
28	2	83200000	SAE WASHER	
29	1	1909	ADJUSTMENT COLLAR	
30	1	1923	SHAFT	
31	1	1405	KNOB	
32	1	53213005	Lock Nut	
33	21	1905	SEED WASHER	
34	1	1913	EXTERNAL RETAINING RINGS	

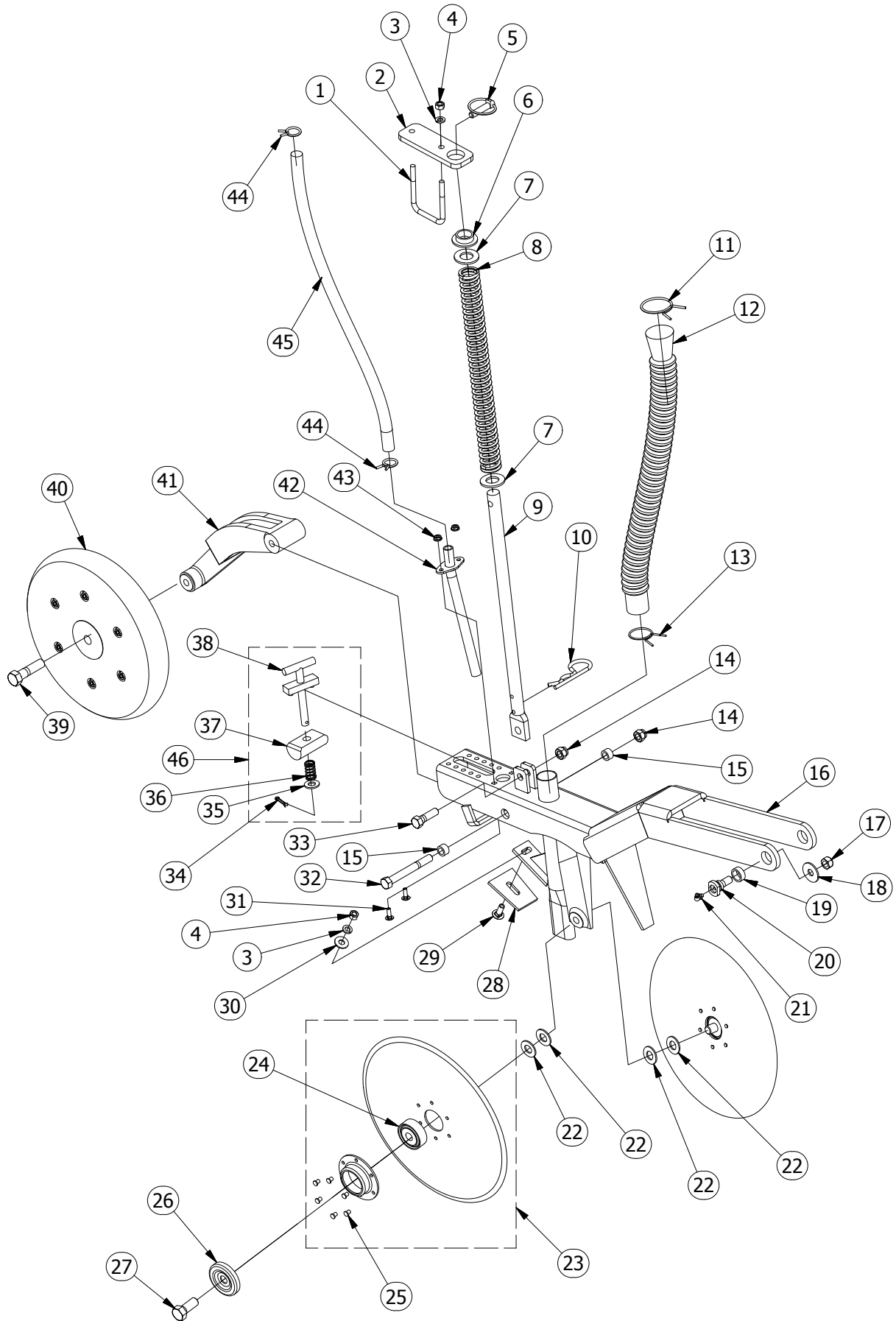
# COULTER UNIT - 5510 DRILL



## COULTER UNIT - 5510 DRILL

PARTS LIST				
ITEM	QTY	PART #	DESCRIPTION	COMMENTS
1	21	1653	COULTER ARM MOUNT	
2	84	64000000	SPRING LOCK WASHER	
3	42	14011075	HEX BOLT	
4	21	54011005	LOCK NUT	
5	21	1655	COULTER SPRING CAP	
6	21	1656	COULTER SPRING	
7	21	Z1490	ZERK , 90 deg	
8	21	33213005	HEX NUT	
9	105	63200000	SPRING LOCK WASHER	
10	21	1657	COULTER SPRING BOLT	
11	21	13213108	HEX BOLT	
12	21	1658	WEAR BUSHING	
13	21	1659	COULTER ARM	
14	21	1660	BEARING WITH SEAL	
15	21	1661	BEARING	
16	21	1665	COULTER HUB	INCLUDES 1662, Z1428
17	21	Z1428	ZERK	
18	21	1667	COULTER SPINDLE WASHER	
19	21	1663	SLOTTED HEX NUT	
20	21	1664	HUB CAP	
21	84	13220035	HEX BOLT	
22	21	1666	COULTER BLADE	
23	21	91100800	COTTER PIN	
24	42	1662	BEARING CUP	
25	21	53213005	LOCK NUT	
26	21	1654	COULTER ARM PIN	
27	21	13213055	HEX BOLT	
28	42	34011005	HEX NUT	
29	21	84000000	SAE WASHER	
30	21	1652	L BOLT	
31	11	1650	LONG MOUNTING BRACKET	
32	10	1651	SHORT MOUNTING BRACKET	

# DISC UNIT - 5510 DRILL

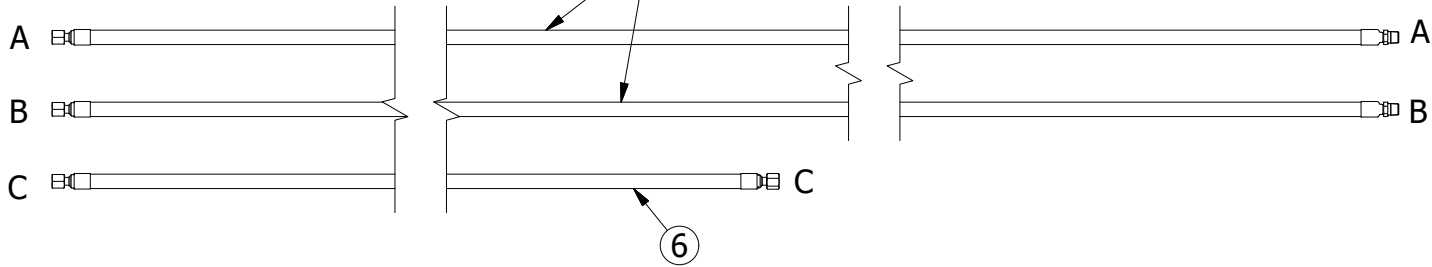
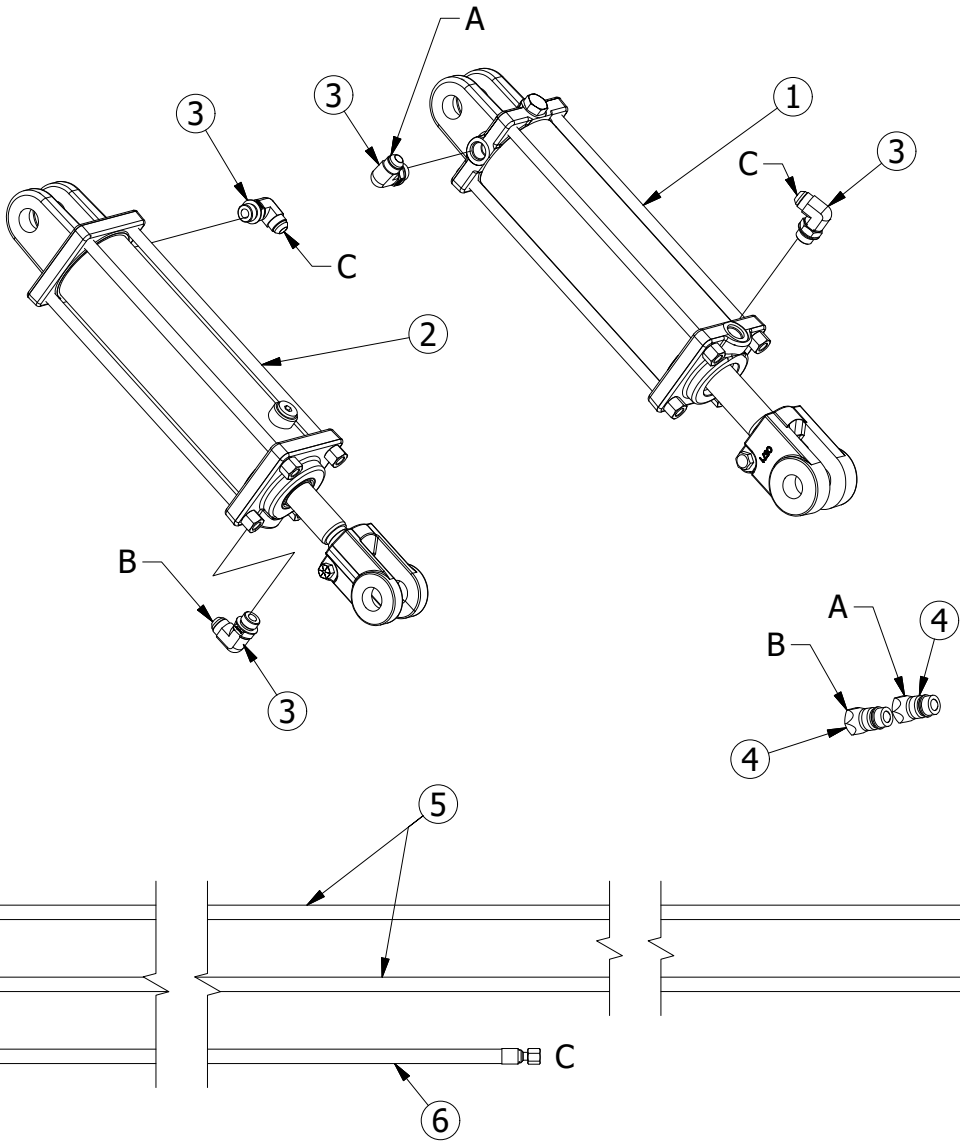




# DISC UNIT - 5510 DRILL

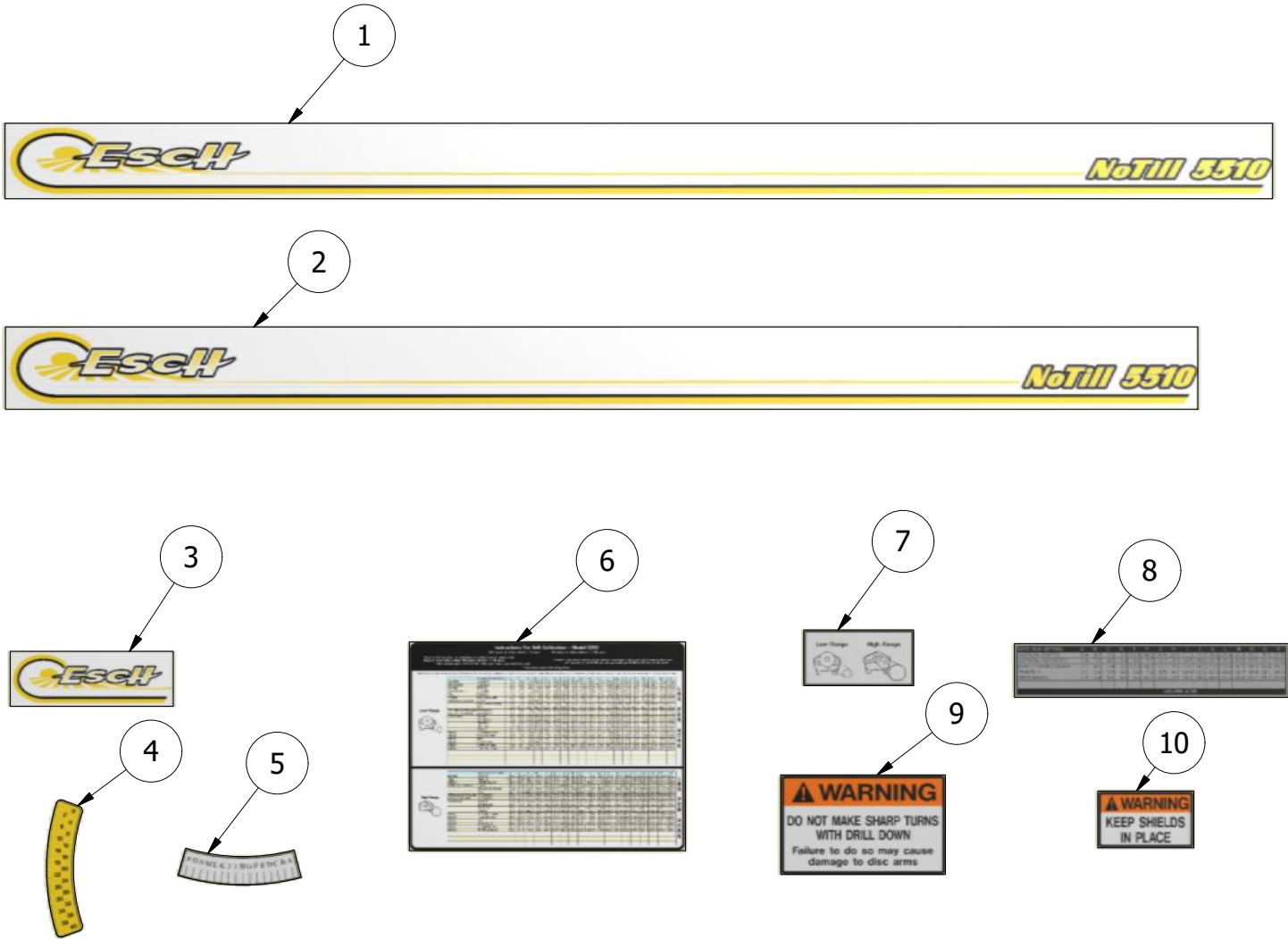
PARTS LIST				
ITEM	QTY	PART #	DESCRIPTION	COMMENTS
1	21	1623	U BOLT	
2	21	1622	ROD PLATE	
3	63	62400000	SPRING LOCK WASHER	
4	63	32416005	HEX NUT	
5	21	1620	LYNCH PIN	
6	21	1621	BUSHING	
7	42	85600000	SAE WASHER	
8	21	1619	SPRING	
9	21	1617	SPRING ROD	
10	21	1618	HAIRPIN	
11	21	1626	HOSE CLAMP	
12	21	1625	HOSE	
13	21	1624	HOSE CLAMP	
14	42	53213005	LOCK NUT	
15	42	1608	BUSHING	
16	21	1603	DOUBLE DISC ARM	
17	42	53213008	STOVER LOCK NUT	
18	42	1600	SPRING WASHER	
19	42	1602	BUSHING	
20	42	1601	WEAR BOLT ROUND	
21	42	Z1490	ZERK , 90 deg	
22	84	84000000	SAE WASHER	
23	42	1605	DISC BLADE	
24	42	1606	BEARING	
25	42	1627	BOLT KIT	
26	42	1604	DUST CAP	
27	42	14011065	HEX BOLT	
28	21	1607	SCRAPER	
29	21	22416042	CARRIAGE BOLT	
30	21	72400000	WASHER	
31	42	21620032	CARRIAGE BOLT	
32	21	13213175	HEX BOLT	
33	21	13213075	HEX BOLT	
34	21	91100400	COTTER PIN	
35	21	83200000	SAE WASHER	
36	21	1613	SPRING	
37	21	1612	DEPTH BLOCK	
38	21	1611	T HANDLE	
39	21	14011105	HEX BOLT	
40	21	1610	WHEEL	
41	21	1609	PACKER WHEEL ARM	
42	21	1614	SEED TUBE	
43	42	41620005	HEX FLANGE NUT	
44	42	1616	HOSE CLAMP	
45	21	1615	SEED HOSE	
46	21	1628	T HANDLE ASSEMBLY	

# HYDRAULICS - 5510 DRILL



PARTS LIST			
ITEM	QTY	PART NUMBER	DESCRIPTION
1	1	1127	HYDRAULIC CYLINDER
2	1	1106	HYDRAULIC CYLINDER
3	4	680188	ADAPTER
4	2	1012	MALE QUICK COUPLER
5	2	1006	HYDRAULIC HOSE
6	1	1005	HYDRAULIC HOSE

# DECALS - 5510 DRILL



PARTS LIST				
ITEM	QTY	PART #	DESCRIPTION	COMMENTS
1	1	1832	FRONT LOGO DECAL	
2	1	1833	REAR LOGO DECAL	
3	2	1819	SIDE DECAL	
4	1	1801	NUMBER GAUGE DECAL	
5	1	1802	LETTER GAUGE DECAL	
6	1	1831	SEED CHART	
7	1	1803	GEARBOX RANGE DECAL	
8	1	1809	SMALL SEED BOX CHART	
9	1	1804	WARNING SHARP TURN DECAL	
10	2	1805	WARNING SHIELDS DECAL	