

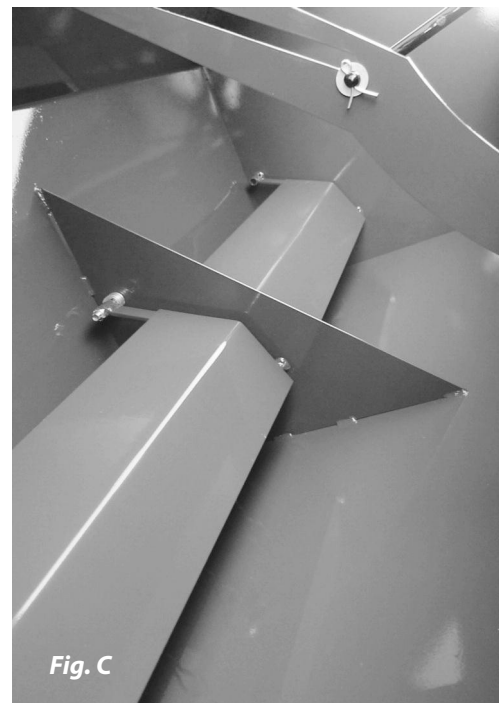
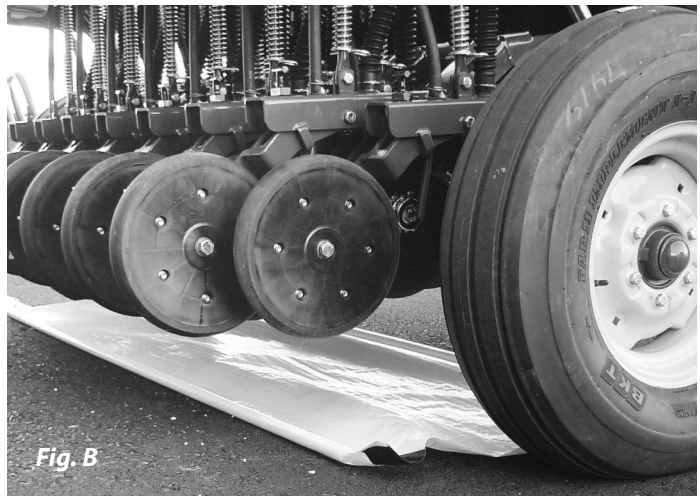
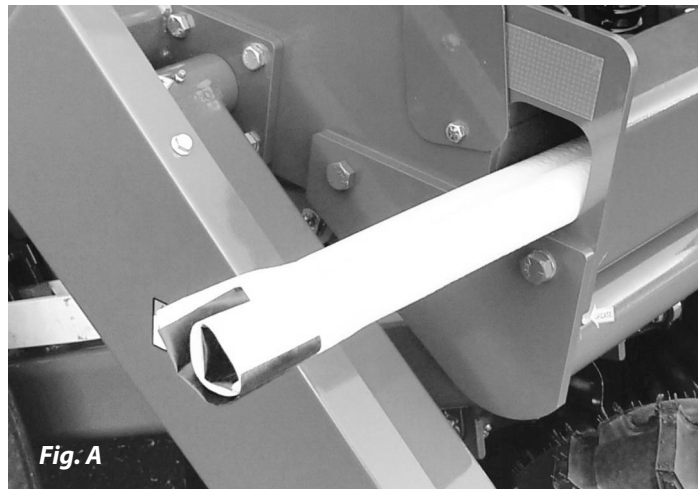
# ESCH - 5505 DRILL

## Operator's Manual and Parts List



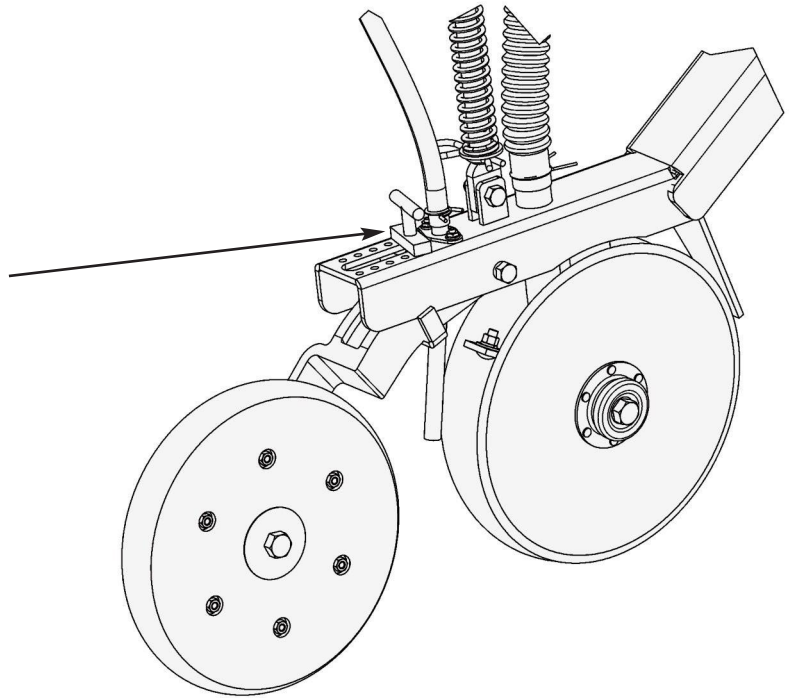
## Seed Calibrations and Settings

- Remove plastic from frame (see Fig. A).
- Place plastic under drill to collect seeds for calibration (see Fig. B).
- See seed chart on lid for further instructions. Note: Be sure to turn drive wheel the correct direction. **WARNING: turning drive wheel too fast will result in wrong calibration. Turn wheel at ground speed.**
- When placing seed in hopper, keep seed baffles down (see Fig.C).
- Keep baffles in up position when seeding fluffy seed.



## Setting Seeding Depth

- No-till coulters depth can only be set by lowering and raising drill.
- Set no-till coulters approximately 1/2" to 1" deeper than seeding depth.
- Seeding depth can be adjusted by sliding T-handle forward for shallow and backward for deeper.



## Safety

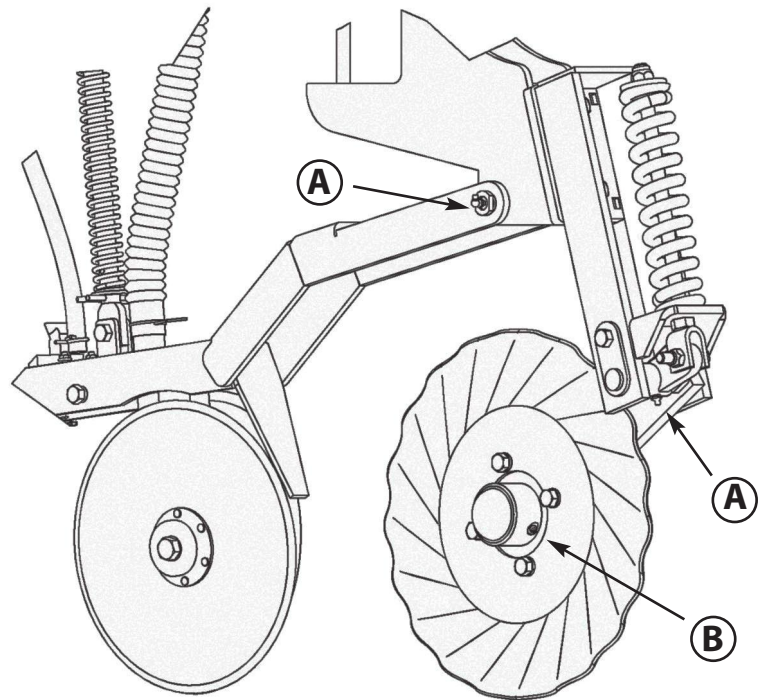
- Do not ride on drill while moving.
- Do not make sharp turns while drill is down.
- Raise drill when going over rocks that are above ground.

## Storage

- Do not store in area where there are lots of mice. Mice like to chew the foams if they can get in the seed box.

## Maintenance

- Grease coulters arms: every 10 hours. **(A)**
- Grease coulters hubs: every 50 hours. **(B)**
- Grease all other zerks: every 20 hours.



## Replacing Foams

- Remove shield on back side of drill (wing nuts).
- Remove shield on left side of seed box.
- Loosen set screws where square shaft slides into round coupler.
- Now shaft is ready to pull out.
- Foam can be cut from plate with a sharp knife or razor.
- Set foams and plate on a piece of card board.
- Spray foams and plates with a spray adhesive.
- Leave set for approximately 1 minute before setting foam on plate.

## **Trouble Shooting**

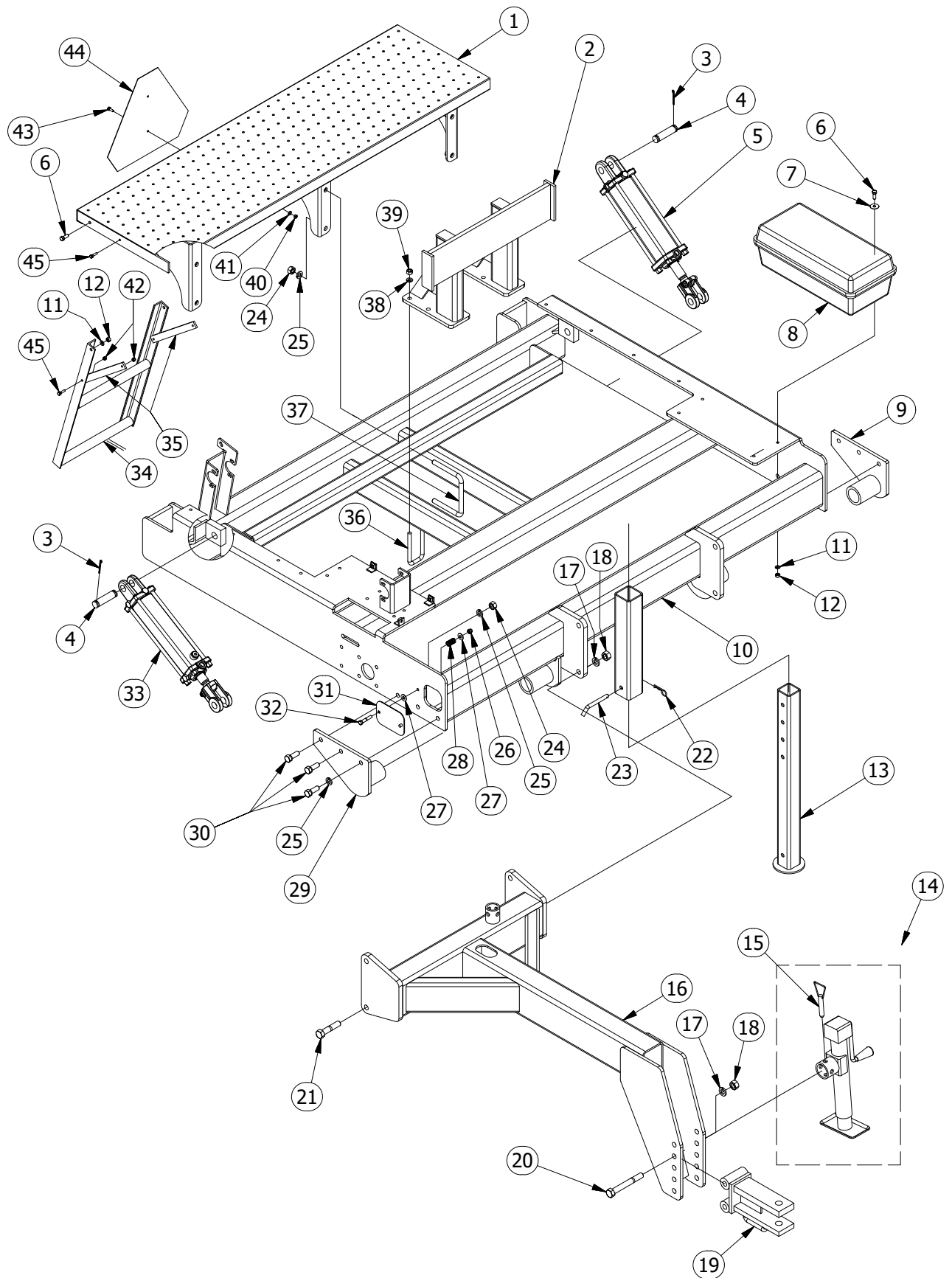
### ***1 - Seed flows faster on one row:***

Foam may be torn or mouse may have chewed a hole in the foam.

### ***2 - One side of drill is lower than other side:***

Raise drill the whole way up to reallign.

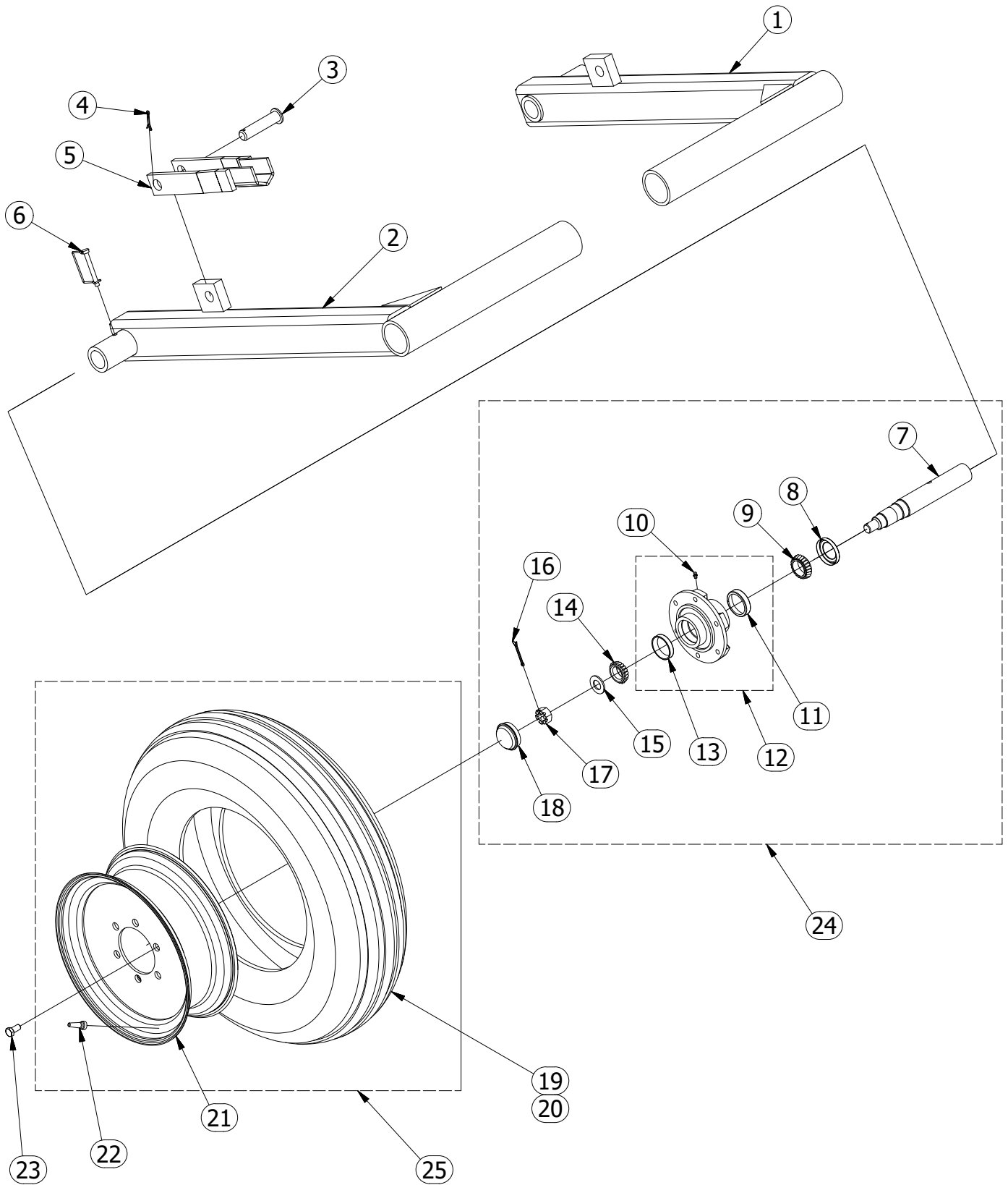
# FRAME ASSEMBLY - 5505 DRILL



# FRAME ASSEMBLY - 5505 DRILL

PARTS LIST				
ITEM	QTY	PART #	DESCRIPTION	COMMENTS
1	1	1131	STEP	
2	1	1132	WEIGHT BRACKET	
3	4	91100800	COTTER PIN	
4	2	1124	PIN	
5	1	1106	HYDRAULIC CYLINDER	
6	6	12416045	HEX BOLT	
7	4	72405000	FENDER WASHER	
8	1	1115	TOOL BOX	
9	1	1108	SUPPORT - LEFT	
10	1	1130	FRAME	
11	6	62400000	SPRING LOCK WASHER	
12	6	32416005	HEX NUT	
13	1	1110	TRANSPORT JACK	
14	1	1101	JACK	
15	1	1102	PIN	
16	1	1133	TONGUE	
17	6	64800000	SPRING LOCK WASHER	
18	6	34810005	HEX NUT	
19	1	1103	HITCH	
20	2	14810245	HEX BOLT	
21	4	14810145	HEX BOLT	
22	1	1128	1/8 HAIRPIN	
23	1	1111	PIN	
24	10	34011005	HEX NUT	
25	12	64000000	SPRING LOCK WASHER	
26	1	52416005	LOCK NUT	
27	2	72400000	WASHER	
28	1	1613	SPRING	
29	1	1109	SUPPORT RIGHT	
30	6	14011075	HEX BOLT	
31	1	1123	TARP COVER	
32	1	12416065	HEX BOLT	
33	1	1107	HYDRAULIC CYLINDER	
34	1	1120	LADDER	
35	2	1121	BRACE	
36	4	1117	U BOLT	
37	3	1118	U BOLT	
38	8	63200000	SPRING LOCK WASHER	
39	8	33213005	HEX NUT	
40	2	31620005	HEX NUT	
41	2	62000000	SPRING LOCK WASHER	
42	4	51620002	LOCK NUT	
43	2	11620035	HEX BOLT	
44	1	1122	SMV	
45	4	11620045	HEX BOLT	

# LIFT WHEEL - 5505 DRILL

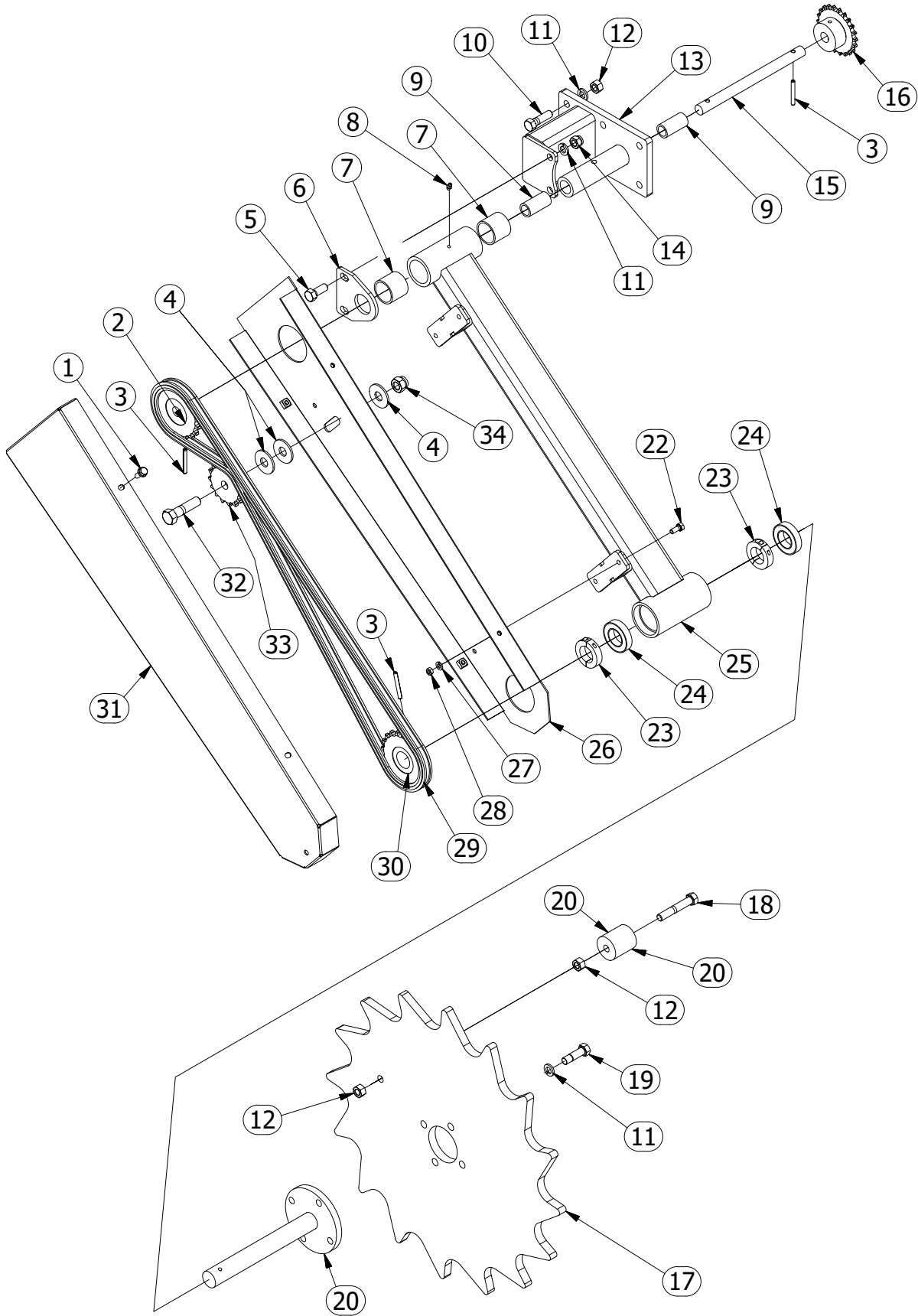




# LIFT WHEEL - 5505 DRILL

PARTS LIST				
ITEM	QTY	PART #	DESCRIPTION	COMMENTS
1	1	1152	LEFT LIFT ARM	
2	1	1151	RIGHT LIFT ARM	
3	2	1167	PIN	
4	2	91120600	COTTER PIN	
5	2	1166	CYLINDER PROP	
6	2	1153	LOCK PIN	
7	2	1154	SPINDLE	
8	2	1156	SEAL	
9	2	1158	BEARING	
10	2	Z1428	ZERK	
11	2	1157	BEARING CUP	
12	2	1155	HUB	INCLUDES 1157, 1159, Z1428
13	2	1159	BEARING CUP	
14	2	1160	BEARING	
15	2	85600000	SAE WASHER	
16	2	91100800	COTTER PIN	
17	2	1663	SLOTTED HEX NUT	
18	2	1664	HUB CAP	
19	2	1162	TIRE	
20	1	1161	INNER TUBE	
21	2	1163	RIM	
22	2	1190	VALVE STEM	
23	12	1512	LUG BOLT	
24	2	1189	SPINDLE AND HUB ASSEMBLY	
25	1	1165	WHEEL ASSEMBLY	INCLUDES 1163, 1165, 1190

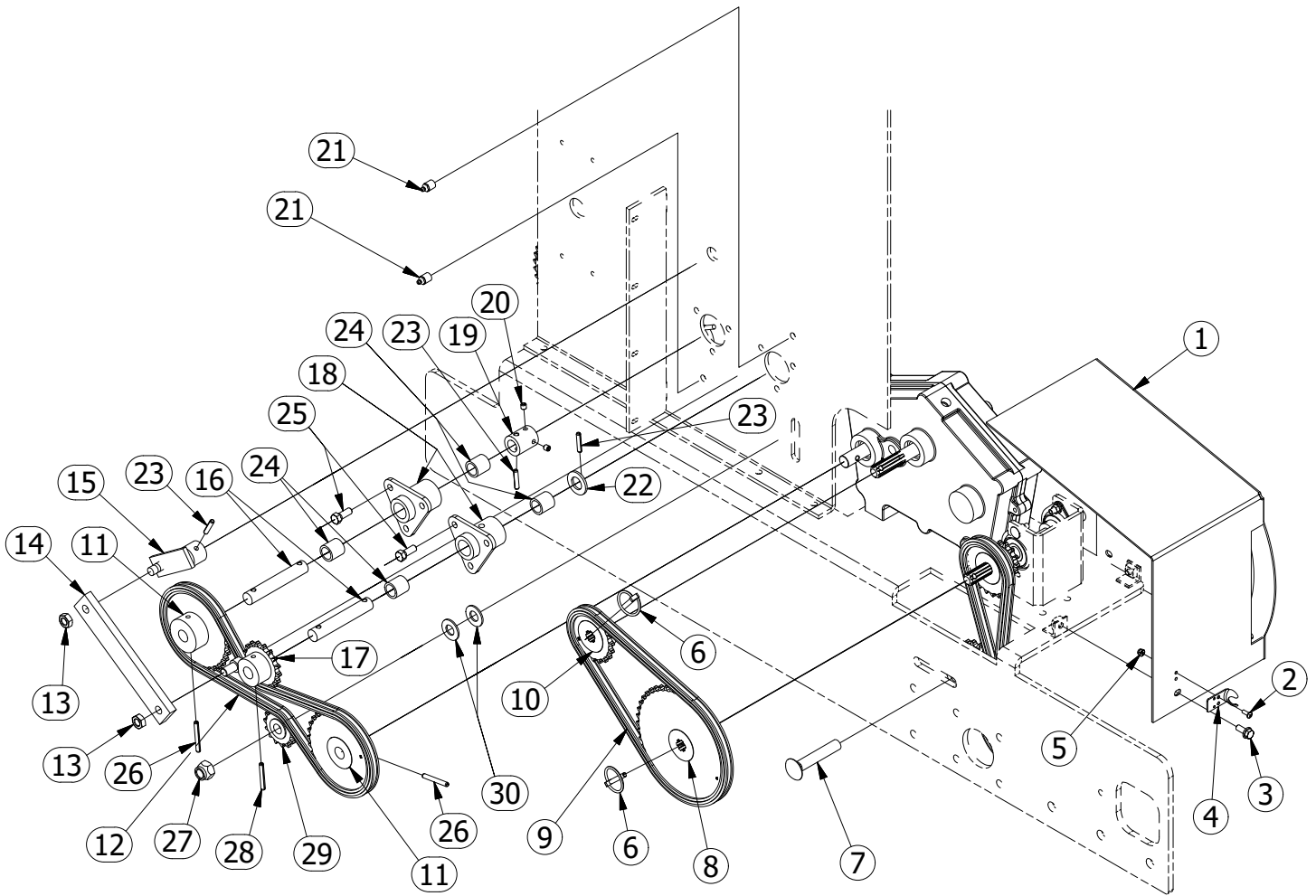
# DRIVE ARM - 5505 DRILL



# DRIVE ARM - 5505 DRILL

PARTS LIST				
ITEM	QTY	PART #	DESCRIPTION	COMMENTS
1	4	12018032	HEX FLANGE BOLT	
2	1	1517	SPROCKET - 20T	
3	3	93160800	ROLL PIN	
4	3	74000000	WASHER	
5	2	13213055	HEX BOLT	
6	1	1502	SUPPORT	
7	2	1518	BUSHING	
8	1	Z1428	ZERK	
9	2	1519	BUSHING	
10	6	13213075	HEX BOLT	
11	12	63200000	SPRING LOCK WASHER	
12	8	33213005	HEX NUT	
13	1	1501	SUPPORT	
14	2	53213005	LOCK NUT	
15	1	1520	SHAFT	
16	1	1527	SPROCKET - 22T	
17	1	1521	DRIVE WHEEL - SOLID	AFTER SERIAL #170367
18	1	13213128	HEX BOLT	
19	4	13220075	HEX BOLT	
20	1	1511	SLEEVE	
21	1	1513	DRIVE WHEEL SPINDLE	
22	4	12018035	HEX BOLT	
23	2	1507	SHAFT COLLAR	
24	2	1506	BEARING	
25	1	1503	DRIVE WHEEL ARM	
26	1	1504	SHIELD	
27	4	62000000	SPRING LOCK WASHER	
28	4	31620005	HEX NUT	
29	1	1515	CHAIN	
30	1	1514	SPROCKET - 20T	
31	1	1505	SHIELD	
32	1	14011105	HEX BOLT	
33	1	1516	IDLER SPROCKET	
34	1	54011005	LOCK NUT	

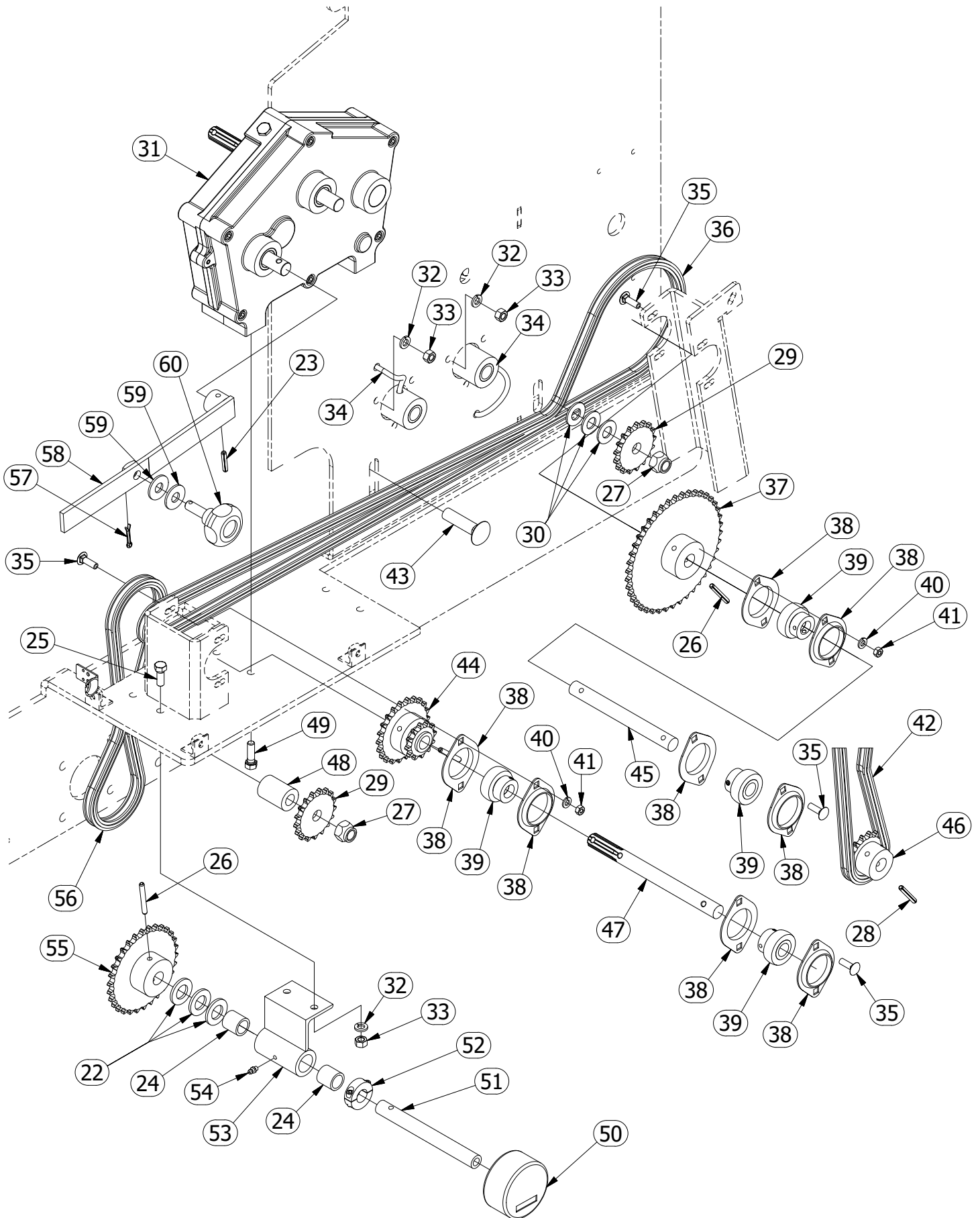
# DRIVE ASSEMBLY - OUTSIDE - 5505 DRILL



# DRIVE ASSEMBLY - OUTSIDE - 5505 DRILL

PARTS LIST				
ITEM	QTY	PART #	DESCRIPTION	COMMENTS
1	1	1403	GEARBOX SHIELD	
2	2	11024022	PAN HEAD MACHINE SCREW	
3	3	12018032	HEX FLANGE BOLT	
4	1	1404	HOOD LATCH SUPPORT	
5	2	51024002	LOCK NUT	
6	2	1421	Lynch Pin	
7	1	24011145	CARRIAGE BOLT	
8	1	1419	SPROCKET - 45T	
9	1	1420	CHAIN	
10	1	1418	SPROCKET - 20T	
11	2	1410	SPROCKET - 40T	
12	1	1426	CHAIN	
13	2	53213002	HEX JAM LOCK NUT	
14	1	1407	AGITATOR LINK	
15	1	1406	AGITATOR ARM	
16	2	1412	SEED BOX JACK SHAFT	
17	1	1408	SPROCKET - 17T	
18	2	1416	TRIANGLE HUB	
19	1	1411	SQUARE COUPLER	
20	2	1414	SET SCREW	
21	2	Z18FP	ZERK	
22	4	84800000	SAE WASHER	
23	4	93160500	ROLL PIN	
24	6	1415	BRONZE BUSHING	
25	8	12416045	HEX BOLT	
26	5	93160800	ROLL PIN	
27	3	54011005	LOCK NUT	
28	2	93160700	ROLL PIN	
29	3	1409	IDLER SPROCKET	
30	5	84000000	SAE WASHER	

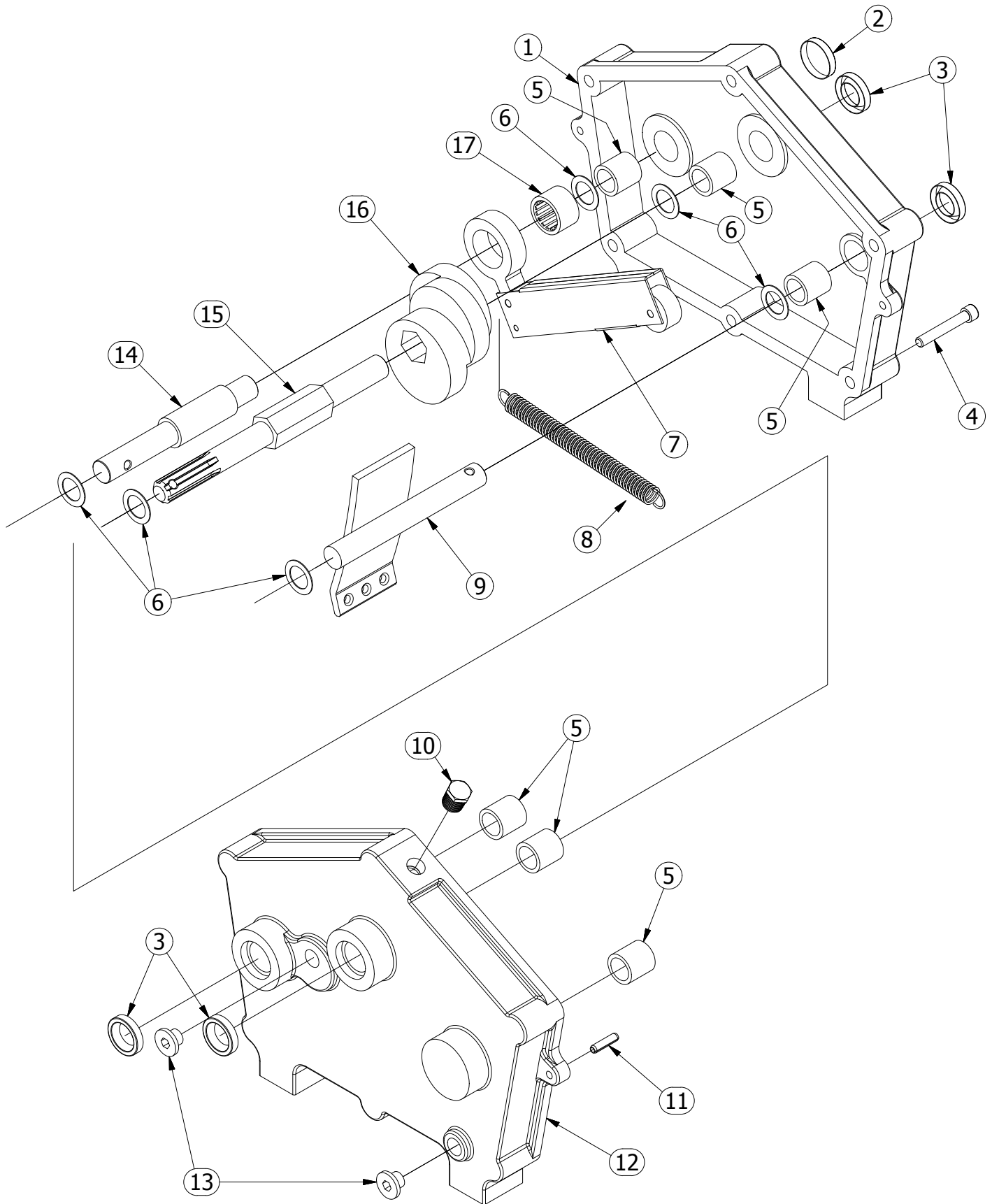
# DRIVE ASSEMBLY - INSIDE - 5505 DRILL



# DRIVE ASSEMBLY - INSIDE - 5505 DRILL

PARTS LIST				
ITEM	QTY	PART #	DESCRIPTION	COMMENTS
22	4	84800000	SAE WASHER	
23	4	93160500	ROLL PIN	
24	6	1415	BRONZE BUSHING	
25	8	12416045	HEX BOLT	
26	5	93160800	ROLL PIN	
27	3	54011005	LOCK NUT	
28	2	93160700	ROLL PIN	
29	3	1409	IDLER SPROCKET	
30	5	84000000	SAE WASHER	
31	1	1401	GEARBOX	
32	12	62400000	SPRING LOCK WASHER	
33	8	32416005	HEX NUT	
34	2	1417	GREASE HOSE	
35	8	22018042	CARRIAGE BOLT	
36	1	1439	CHAIN	
37	1	1435	SPROCKET - 42T	
38	8	1424	BEARING FLANGE	
39	4	1423	BEARING	
40	8	62000000	SPRING LOCK WASHER	
41	8	31620005	HEX NUT	
42	1	1438	CHAIN	
43	2	24011105	CARRIAGE BOLT	
44	1	1425	SPROCKET - 22T, 12T	
45	1	1436	SHAFT	
46	1	1437	SPROCKET - 16T	
47	1	1422	SPLINE SHAFT	
48	1	1428	SPACER	
49	4	12416055	HEX BOLT	
50	1	1431	ACRE METER	
51	1	1430	ACRE METER SHAFT	
52	1	1433	SHAFT COLLAR	
53	1	1432	SUPPORT	
54	1	Z1428	ZERK	
55	1	1445	SPROCKET - 30T	
56	1	1434	CHAIN	
57	1	91100400	COTTER PIN	
58	1	1402	GEARBOX LEVER	
59	2	73200000	WASHER	
60	1	1405	KNOB	

# GEARBOX - 5505 DRILL

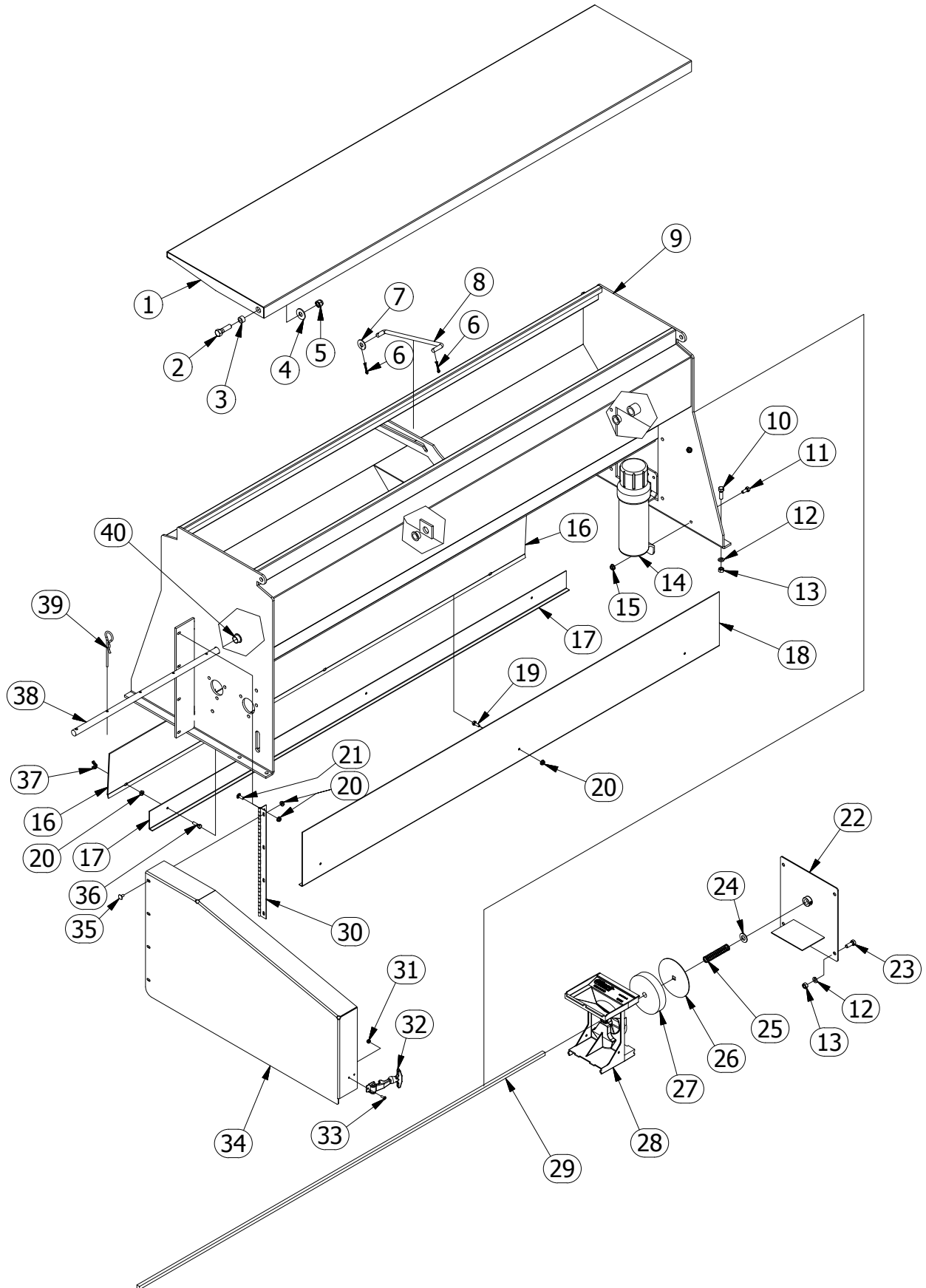




## GEARBOX - 5505 DRILL

PARTS LIST				
ITEM	QTY	PART #	DESCRIPTION	COMMENTS
1	1	1301	GEARBOX LEFT CASTING	INCLUDES #1310, 1311, 1415
2	1	1311	CAP	
3	4	1310	SEAL	
4	6	1312	SOCKET HEAD BOLT	
5	6	1415	BRONZE BUSHING	
6	6	1316	SHIM WASHER	
7	3	1306	GEARBOX ARM	
8	3	1309	SPRING	
9	1	1303	CAM GUIDE	
10	1	1315	BREATHER PLUG	
11	2	93160400	ROLL PIN	
12	1	1302	GEARBOX RIGHT CASTING	INCLUDES #1310, 1415
13	2	1314	PLUG	
14	1	1308	SHAFT	
15	1	1304	SHAFT	
16	1	1305	GEARBOX CAM	
17	3	1307	CLUTCH BEARING	

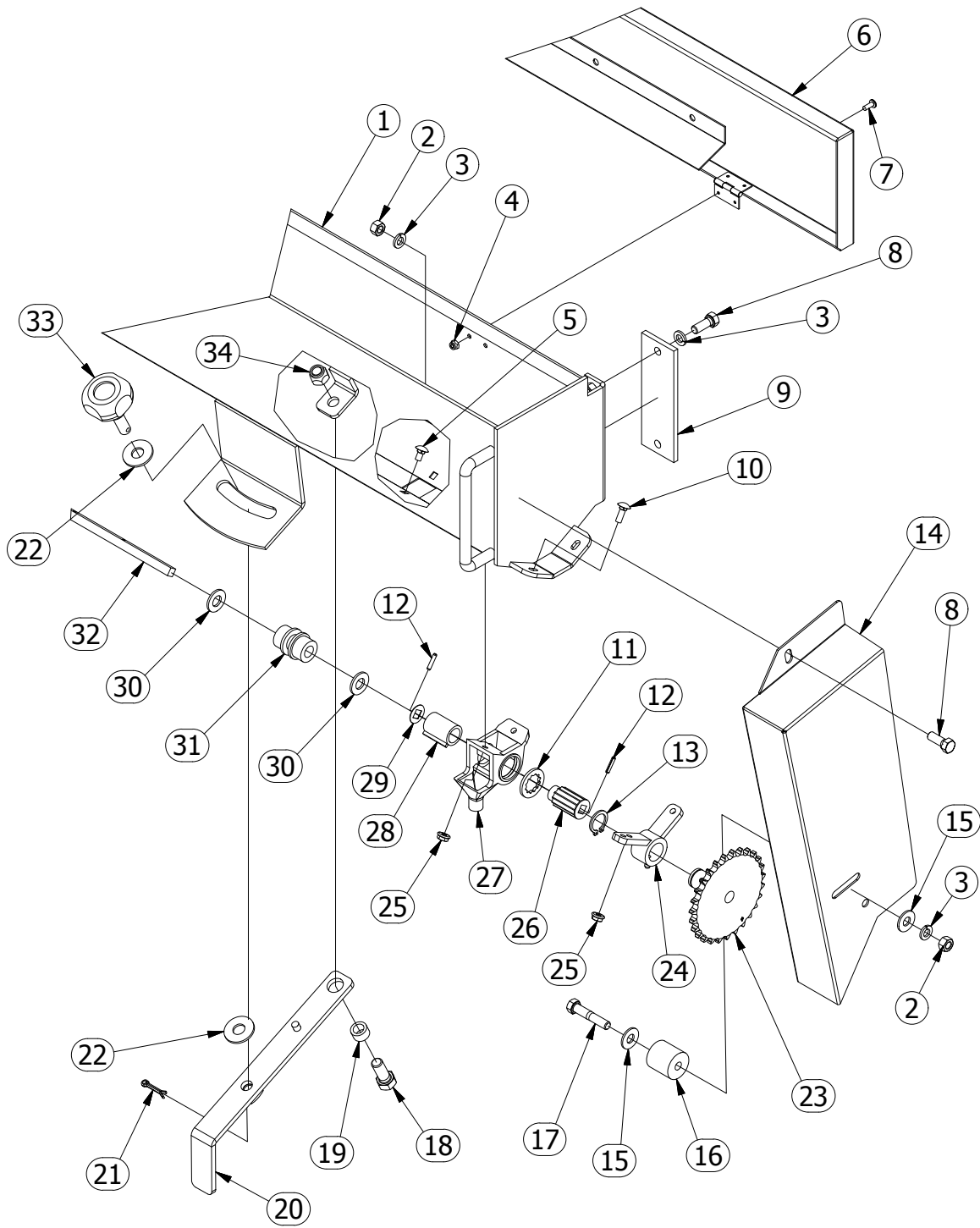
# SEED BOX ASSEMBLY - 5505 DRILL



# SEED BOX ASSEMBLY - 5505 DRILL

PARTS LIST				
ITEM	QTY	PART #	DESCRIPTION	COMMENTS
1	1	1232	SEED BOX LID	
2	2	13213075	HEX BOLT	
3	2	1608	BUSHING	
4	2	73200000	WASHER	
5	2	53213005	LOCK NUT	
6	2	91100400	COTTER PIN	
7	1	72800000	WASHER	
8	1	1238	LID GUIDE	
9	1	1231	SEED BOX	
10	8	12416055	HEX BOLT	
11	2	12018035	HEX BOLT	
12	12	62400000	SPRING LOCK WASHER	
13	12	32416005	HEX NUT	
14	1	1220	MANUAL HOLDER	
15	2	41818005	HEX FLANGE NUT	
16	1	1235	REAR SHEILD REMOVABLE	
17	1	1234	REAR SHIELD	
18	1	1233	FRONT SHIELD	
19	2	11620035	HEX BOLT	
20	13	41620005	HEX FLANGE NUT	
21	4	21620032	CARRIAGE BOLT	
22	1	1208	COVER	
23	4	12416045	HEX BOLT	
24	12	83600000	SAE WASHER	
25	12	1212	SPRING	
26	12	1210	FOAM PLATE	
27	12	1211	FOAM	
28	12	1209	SEED SHOOT	
29	1	1236	SEED BOX DRIVE SHAFT	
30	1	1217	HINGE	
31	2	51024002	LOCK NUT	
32	1	1219	HOOD LATCH	
33	2	11024022	PAN HEAD MACHINE SCREW	
34	1	1218	GEARBOX SHIELD	
35	4	21620022	CARRIAGE BOLT	
36	3	11620045	HEX BOLT	
37	3	1207	WING NUT	
38	1	1237	AGITATOR SHAFT	
39	12	1216	AGITATOR CLIP	
40	3	1214	BUSHING	

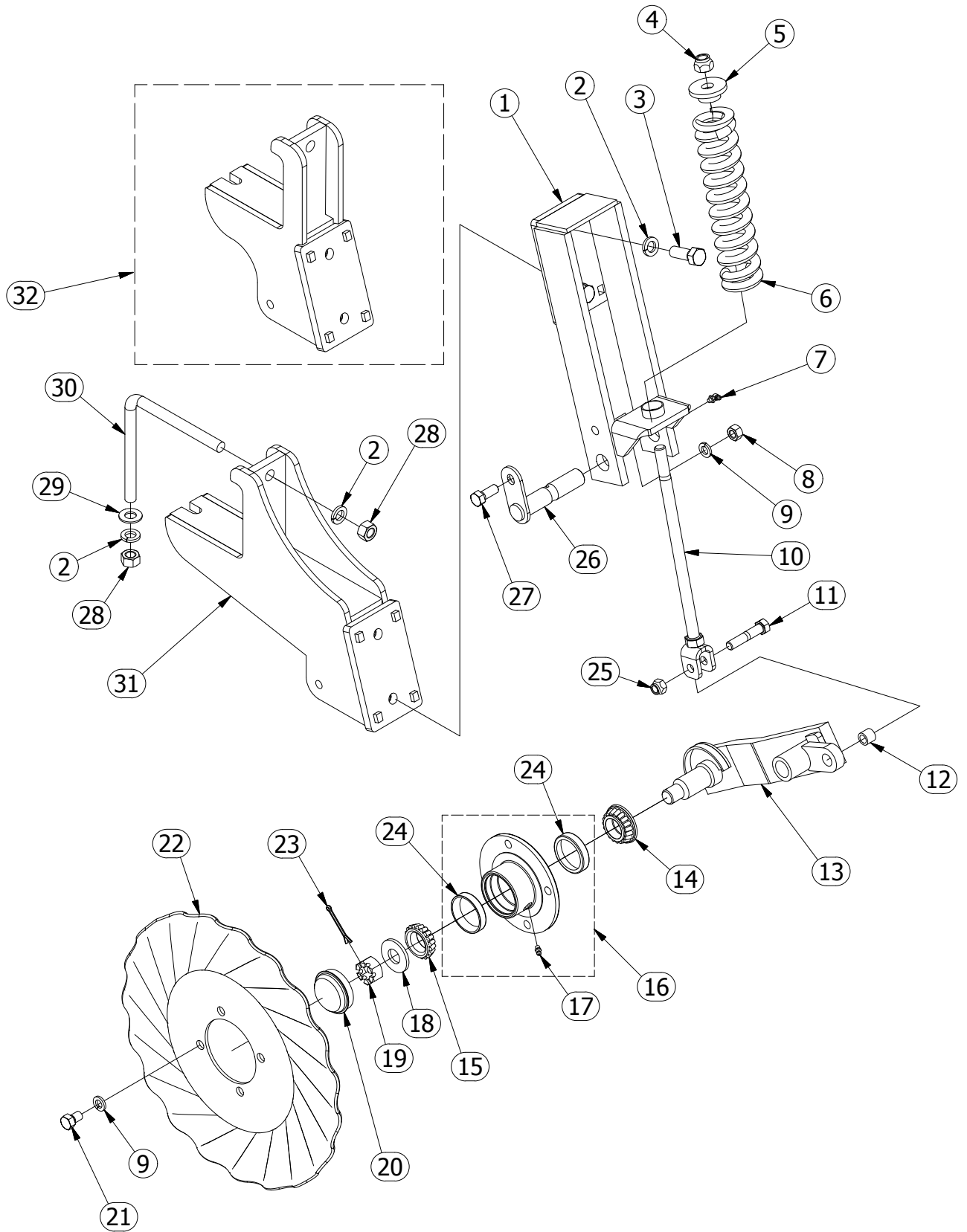
# SMALL SEED BOX - 5505 DRILL



## SMALL SEED BOX - 5505 DRILL

PARTS LIST				
ITEM	QTY	PART #	DESCRIPTION	COMMENTS
1	1	1931	SEED BOX	
2	2	32416005	HEX NUT	
3	6	62400000	SPRING LOCK WASHER	
4	4	51024002	LOCK NUT	
5	24	21620022	CARRIAGE BOLT	
6	1	1932	LID	
7	4	11024022	PAN HEAD MACHINE SCREW	
8	5	12416045	HEX BOLT	
9	2	1900	SUPPORT	
10	2	21620032	CARRIAGE BOLT	
11	12	1905	SEED WASHER	
12	24	93100300	ROLL PIN	
13	1	1913	EXTERNAL RETAINING RINGS	
14	1	1934	SHIELD	
15	2	72400000	WASHER	
16	1	1915	CHAIN TIGHTNER	
17	1	12416065	HEX BOLT	
18	1	13213055	HEX BOLT	
19	1	1608	BUSHING	
20	1	1910	SMALL BOX LEVER	
21	1	91100400	COTTER PIN	
22	2	73200000	WASHER	
23	1	1912	SPROCKET	
24	1	1911	BEARING	
25	26	41620005	HEX FLANGE NUT	
26	12	1906	SEED SPROCKET	
27	12	1904	SEED CUP	
28	12	1907	SLEEVE	
29	12	1908	WASHER	
30	2	83200000	SAE WASHER	
31	1	1909	ADJUSTMENT COLLAR	
32	1	1933	SHAFT	
33	1	1405	KNOB	
34	1	53213005	LOCK NUT	

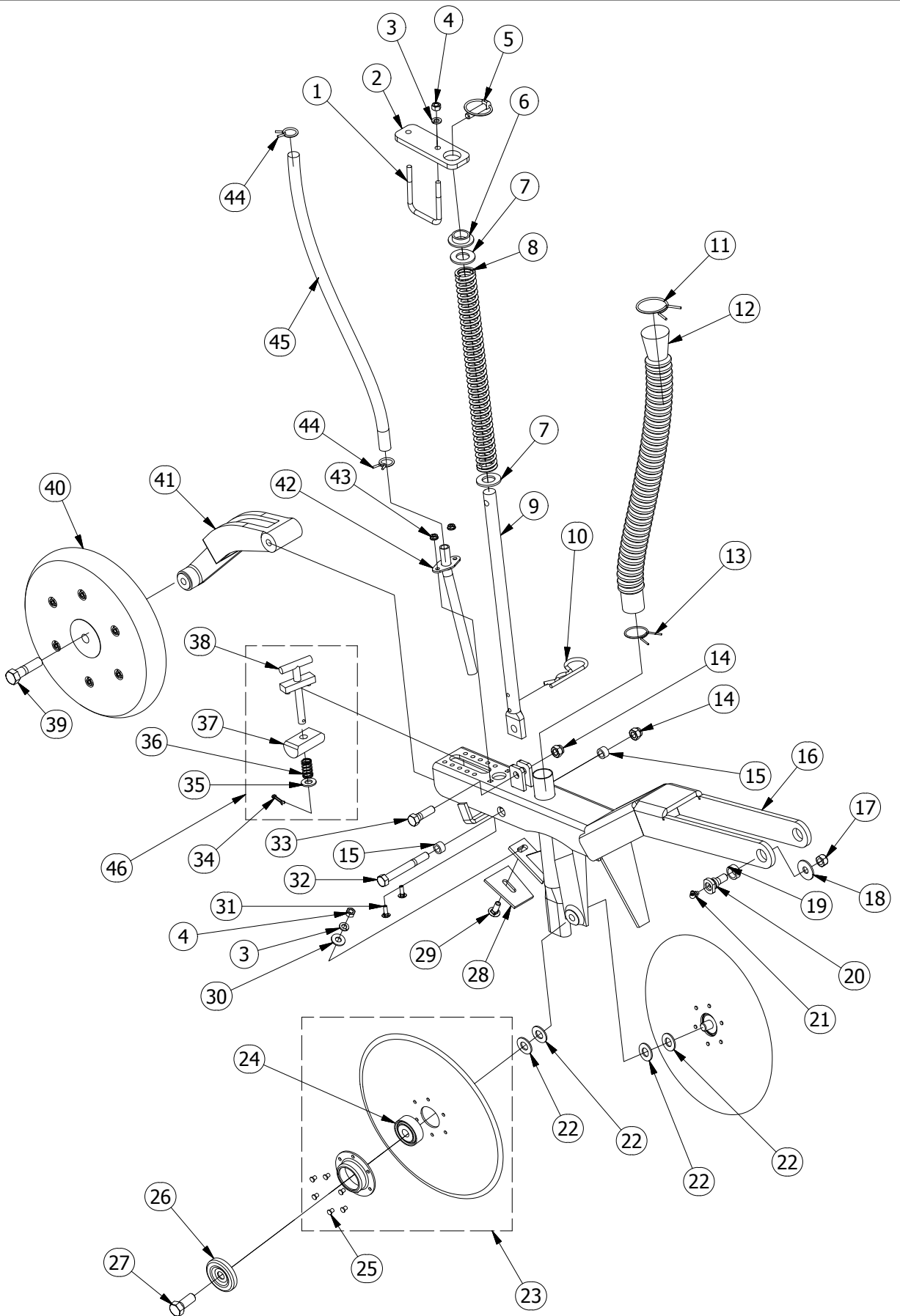
# COULTER UNIT - 5505 DRILL



## COULTER UNIT - 5505 DRILL

PARTS LIST				
ITEM	QTY	PART #	DESCRIPTION	COMMENTS
1	12	1653	COULTER ARM MOUNT	
2	48	64000000	SPRING LOCK WASHER	
3	24	14011075	HEX BOLT	
4	12	54011005	LOCK NUT	
5	12	1655	COULTER SPRING CAP	
6	12	1656	COULTER SPRING	
7	12	Z1490	ZERK , 90 deg	
8	12	33213005	HEX NUT	
9	60	63200000	SPRING LOCK WASHER	
10	12	1657	COULTER SPRING BOLT	
11	12	13213108	HEX BOLT	
12	12	1658	WEAR BUSHING	
13	12	1659	COULTER ARM	
14	12	1660	BEARING WITH SEAL	
15	12	1661	BEARING	
16	12	1665	COULTER HUB	INCLUDES 1662, Z1428
17	12	Z1428	ZERK	
18	12	1667	COULTER SPINDLE WASHER	
19	12	1663	SLOTTED HEX NUT	
20	12	1664	HUB CAP	
21	48	13220035	HEX BOLT	
22	12	1666	COULTER BLADE	
23	12	91100800	COTTER PIN	
24	24	1662	BEARING CUP	
25	12	53213005	LOCK NUT	
26	12	1654	COULTER ARM PIN	
27	12	13213055	HEX BOLT	
28	24	34011005	HEX NUT	
29	12	84000000	SAE WASHER	
30	12	1652	L BOLT	
31	6	1650	LONG MOUNTING BRACKET	
32	6	1651	SHORT MOUNTING BRACKET	

# DISC UNIT - 5505 DRILL

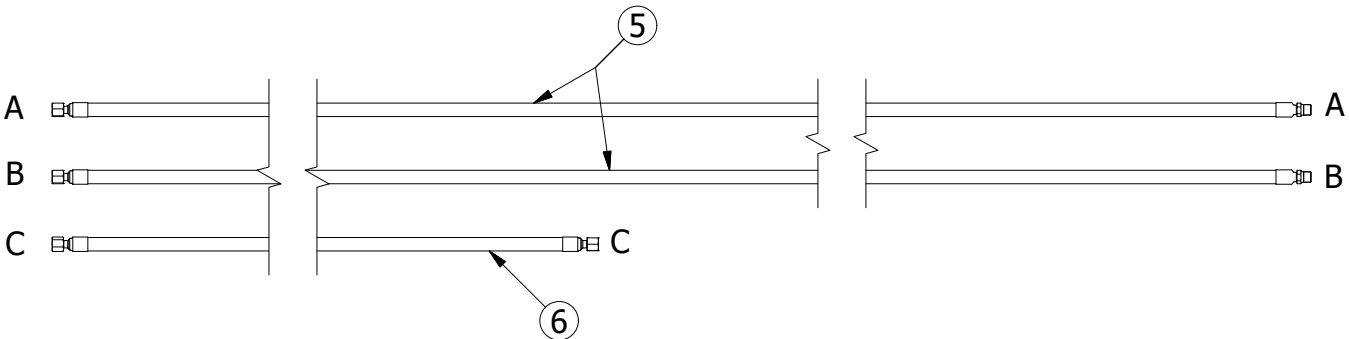
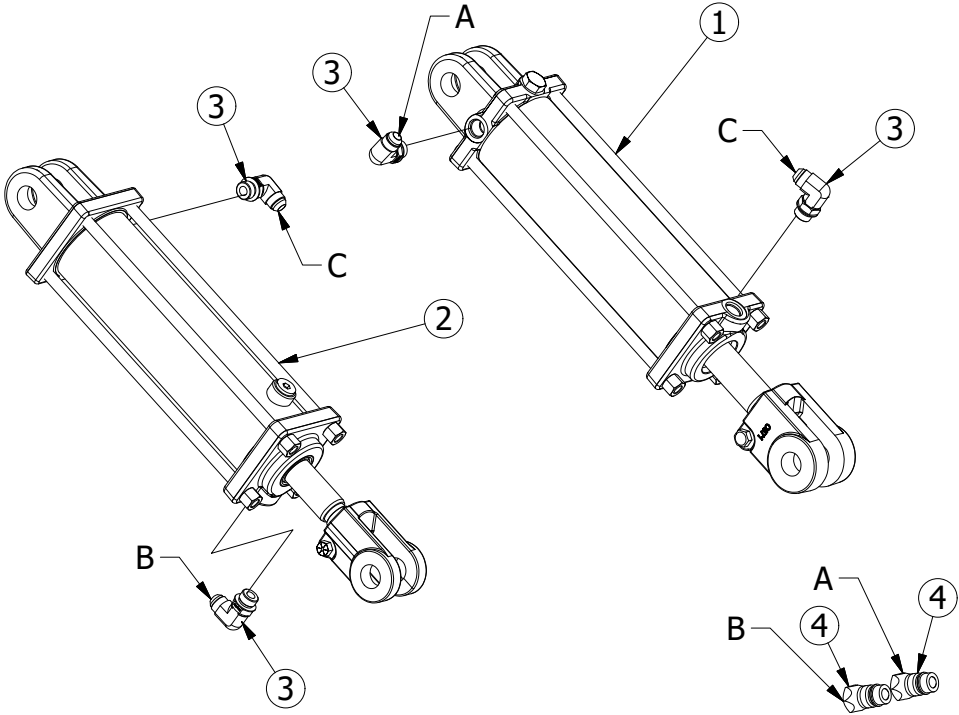




# DISC UNIT - 5505 DRILL

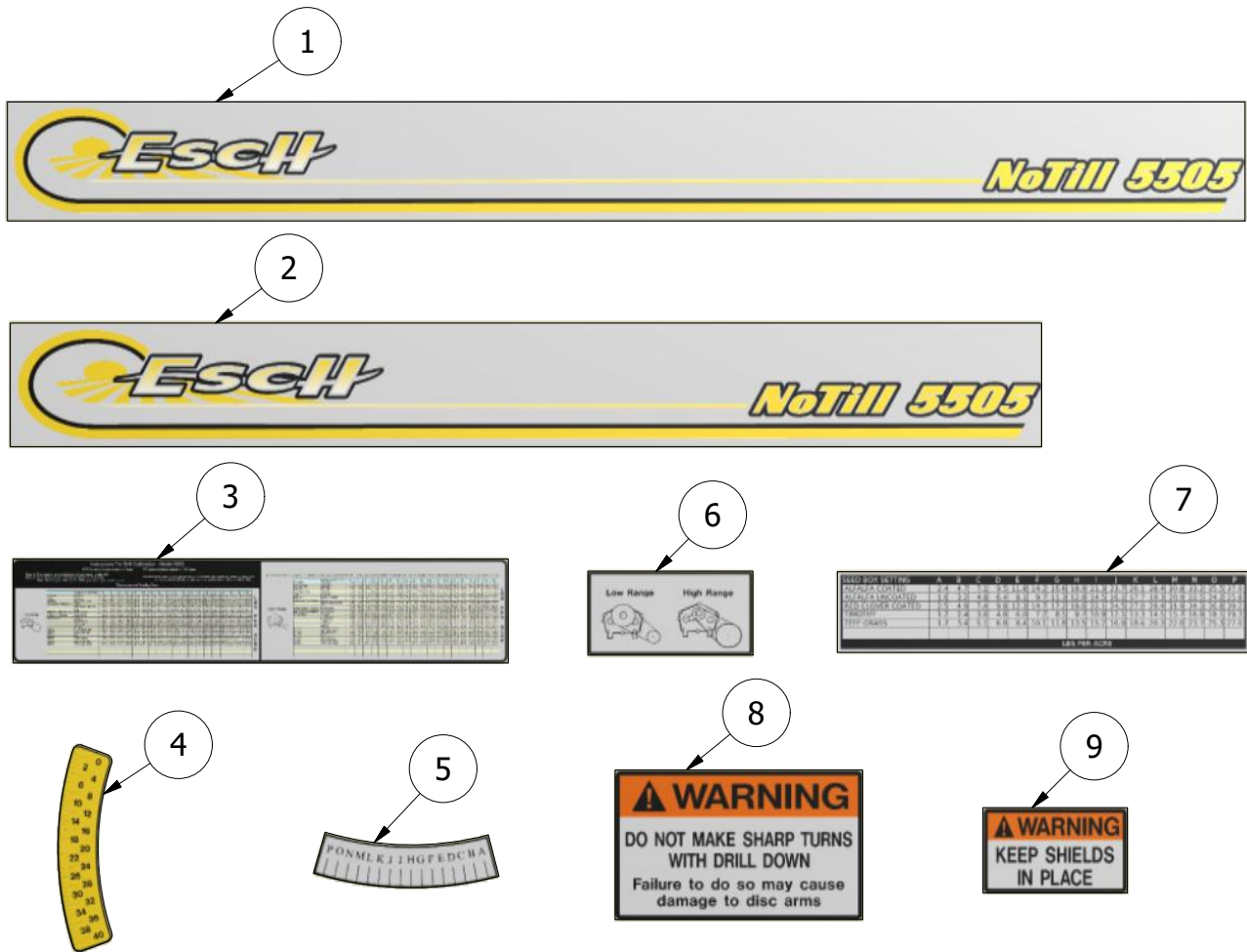
PARTS LIST				
ITEM	QTY	PART #	DESCRIPTION	COMMENTS
1	12	1623	U BOLT	
2	12	1622	ROD PLATE	
3	36	62400000	SPRING LOCK WASHER	
4	36	32416005	HEX NUT	
5	12	1620	LYNCH PIN	
6	12	1621	BUSHING	
7	24	85600000	SAE WASHER	
8	12	1619	SPRING	
9	12	1617	SPRING ROD	
10	12	1618	HAIRPIN	
11	12	1626	HOSE CLAMP	
12	12	1625	HOSE	
13	12	1624	HOSE CLAMP	
14	24	53213005	LOCK NUT	
15	24	1608	BUSHING	
16	12	1603	DOUBLE DISC ARM	
17	24	53213008	STOVER LOCK NUT	
18	24	1600	SPRING WASHER	
19	24	1602	BUSHING	
20	24	1601	WEAR BOLT ROUND	
21	24	Z1490	ZERK , 90 deg	
22	48	84000000	SAE WASHER	
23	24	1605	DISC BLADE	
24	24	1606	BEARING	
25	24	1627	BOLT KIT	
26	24	1604	DUST CAP	
27	24	14011065	HEX BOLT	
28	12	1607	SCRAPER	
29	12	22416042	CARRIAGE BOLT	
30	12	72400000	WASHER	
31	24	21620032	CARRIAGE BOLT	
32	12	13213175	HEX BOLT	
33	12	13213075	HEX BOLT	
34	12	91100400	COTTER PIN	
35	12	83200000	SAE WASHER	
36	12	1613	SPRING	
37	12	1612	DEPTH BLOCK	
38	12	1611	T HANDLE	
39	12	14011105	HEX BOLT	
40	12	1610	WHEEL	
41	12	1609	PACKER WHEEL ARM	
42	12	1614	SEED TUBE	
43	24	41620005	HEX FLANGE NUT	
44	24	1616	HOSE CLAMP	
45	12	1615	SEED HOSE	
46	12	1628	T HANDLE ASSEMBLY	

# HYDRAULICS - 5505 DRILL



PARTS LIST			
ITEM	QTY	PART NUMBER	DESCRIPTION
1	1	1106	HYDRAULIC CYLINDER
2	1	1107	HYDRAULIC CYLINDER
3	4	680188	ADAPTER
4	2	1012	MALE QUICK COUPLER
5	2	1002	HYDRAULIC HOSE
6	1	1001	HYDRAULIC HOSE

# DECALS - 5505 DRILL



PARTS LIST				
ITEM	QTY	PART #	DESCRIPTION	COMMENTS
1	1	1812	5505 - FRONT LOGO DECAL	
2	1	1813	5505 - REAR LOGO DECAL	
3	1	1811	5505 - SEED CHART	
4	1	1801	NUMBER GAUGE DECAL	
5	1	1802	LETTER GAUGE DECAL	
6	1	1803	GEARBOX RANGE DECAL	
7	1	1809	SMALL SEED BOX CHART	
8	1	1804	WARNING SHARP TURN DECAL	
9	2	1805	WARNING SHIELDS DECAL	